



PURE™
FINE FABRIC · FINE LIVING

aproyale

furnishing by ap asianpaints

NEHTAYA

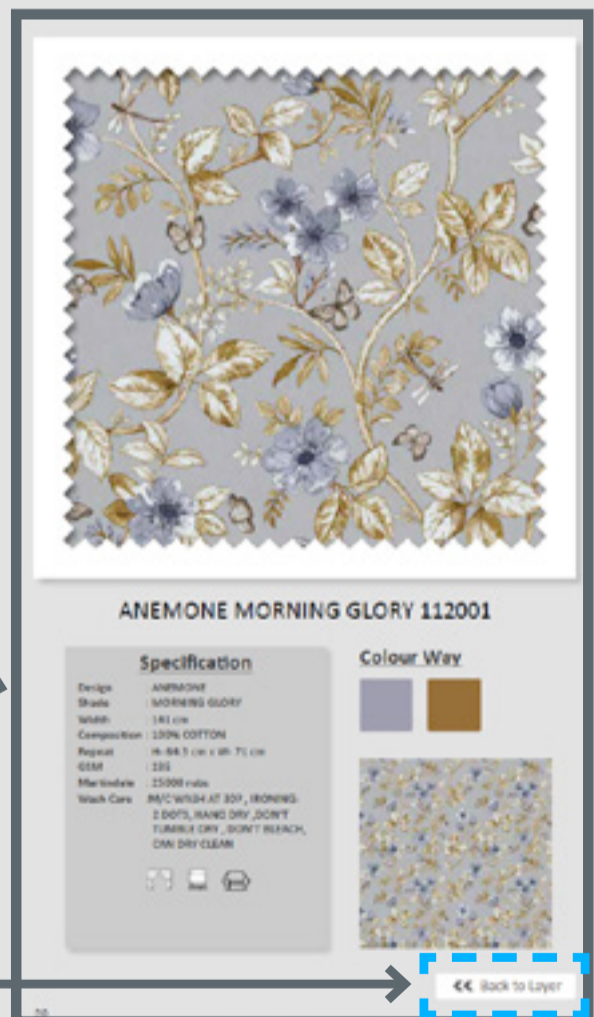
ap asianpaints

GUIDE TO USING THIS E-CATALOGUE

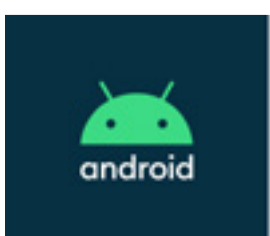
This Ecatalogue has built in links which when clicked will take to you relevant sections for easy accessibility.



Click on these sections to take you to its Fabric Swatch page for a detailed view.



Click on the button below to go back to its layers page



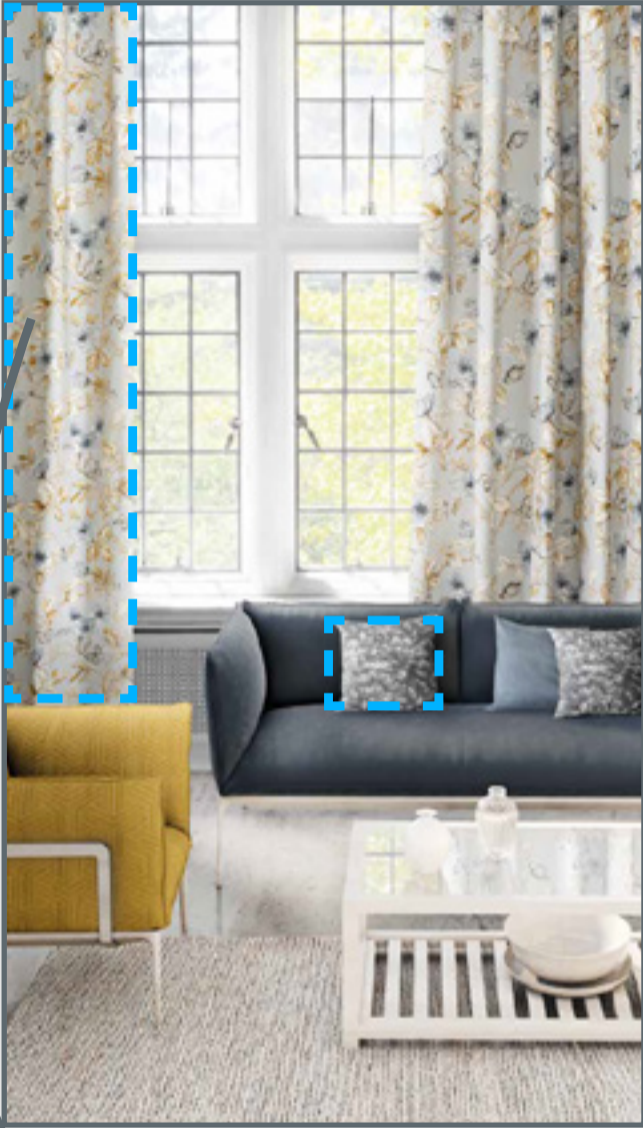
This Ecatalogue is best viewed at maximum brightness.

If you are viewing this on Android Phone please download the following App to experience the interactivity in this e-catalogue:

Adobe Acrobat Reader: PDF Viewer, Editor & Creator

GUIDE TO USING THIS E-CATALOGUE

Photo section pages also have built in links.



Click on fabrics seen in the Photo to take you to its Fabric Swatch page for a detailed view.

Click on the button to go back to image

DISCLAIMER

Viewers of this e-catalogue are requested to refer to our **physical catalogs available at select stores** for more accurate representation of the end fabric, since there may be colour variation **due to different capabilities** of various display devices. We try to edit our images to show the samples as life-like as possible, but please note that the actual color of the physical fabric may vary from **what is seen** on your device.

NEHTAYA

Nehtaya is an extremely refined collection of florals, geometrics and textures. Rich in all its techniques, the effortless coordination of embroidery, jacquard and print in colors ranging from earthy naturals to soft pastels and bright oranges combined with rich tones of green, is a delight to the eye. Suitable for drapes and upholstery, this collection is perfect for a chic modern home.

INDEX



Layers

Pg 9



Fabric Swatches

Pg 20



Technical Report

Pg 198





RECOMMENDED WALL TREATMENT



CURTAINS / BLINDS 112028

ACCENT

ACCENT

WALL PAINT

WALL PAINT

WALL PAINT



UPHOLSTERY SOFA 112007



UPHOLSTERY CHAIR 112010

RECOMMENDED PROPS



RECOMMENDED RUG



RECOMMENDED FLOORING



RECOMMENDED TILE



CUSHIONS 106133



CUSHIONS 109518

RUSTIC CHARM



Inspired from the classical shapes of Murano diffuser a set of beautifully crafted ceiling lamps with opal white diffuser made from blown glass with a brushed brass extension add elegance and class to space.

French Art Deco bookends by MaxLe Verrier, 1930 a vintage collectable is a statement piece in its jade green painted metal and black marble base.



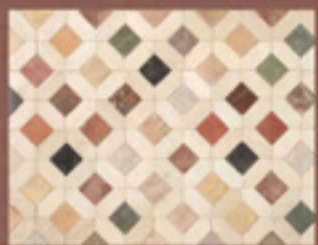
A striking piece to the room the buffet lamp by Diamond Lamps in its antique mercury glass base with a crackle finish and bronze colour steel mounting. This adds a contemporary modern finish in its oval brown-copper silkette with bright copper liner.



Landscape texture plaster panel with gold striping is a beautiful scenic piece by Fred Cox. The treatment of the painting and the old gold finish frame portrays a timeless piece of art.



Inspired by the classic design of the 1950s, transmitting a feeling of comfort in its elongated curved back, wide arms and slim brass legs an armchair by Carmenes creates elegance and temperance.



Dougga Honed Limestone Mosaic by Country floors in flow with its colour palette adds vibrancy to the space giving it a very rustic appeal.



A whitewashed grainy wall treatment adds freshness in contrast to the mosaic tile and cement flooring, setting the base for a visual play of colours.



The simplicity of spatulated cement tiles by Florim create an artful aesthetic impact, a distinctive feature crafted by hand.



Serbian design handmade ceramic ribbed textural pots add freshness complementing the floral patterns in the room.



Made from solid salvaged pine the Cardiff 7 Drawer Dresser in its natural patina finish has a very rustic timeless appeal to it, one that is robust and elegant.



San Francisco Woodnotes rug by Ritva Puotila is made of paper yarn and cotton. Its play of vertical and horizontal lines and colour dynamics replicate the colours and compliment the geometrics.



Made from Mango wood this Desi Meubles round iron side table with a wooden walnut tray like tabletop and black metal body brings in a retro touch.



A phenomenally crafted piece of art, a glazed pottery vase by Australian ceramic artists exhibited at the Kerrie Lowe Gallery 2016. This is a beautiful addition unique in its distressed form and blends of colours.

NEHTAYA

ANEMONE | MORNING GLORY | FLORAL | 112001



KATYA | GRANOLA | BOTANICAL | 112026



VALERIO | SPRUCE | TEXTURE |
109537



QUINTON | COBALT | TEXTURE
| 106124



FABIO | SHADOW | IMPRESSION | 112002



FRISCO | YALE | GEOMETRIC | 112004




RENATO | TUSCAN | GEOMETRIC | 112005



Click on fabric to view details



◀ INDEX

NEHTAYA


ANEMONE | SALMON | FLORAL | 112021   


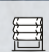

KATYA | SCARLET BLUE | BOTANICAL | 112027  

VALERIO | PIGEON | TEXTURE |
109525   

QUINTON | FERROUS | TEXTURE
| 106115   

FABIO | PANSY | IMPRESSION | 112022   

FRISCO | NUDE | GEOMETRIC | 112024   

RENATO | CADET BLUE | GEOMETRIC | 112025   

Click on fabric to view details

◀◀ INDEX





RECOMMENDED
FLOORING



- WALL PAINT
- ACCENT
- ACCENT
- WALL PAINT



RECOMMENDED
WALL TREATMENT



RUSTIC CHARM



Inspired from the classical shapes of Murano diffuser a set of beautifully crafted ceiling lamps with opal white diffuser made from blown glass with a brushed brass extension add elegance and class to space.



French Art Deco bookends by MaxLe Verrier, 1930 a vintage collectable is a statement piece in its jade green painted metal and black marble base.



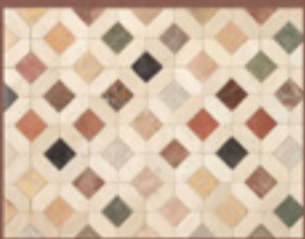
A striking piece to the room the buffet lamp by Diamond Lamps in its antique mercury glass base with a crackle finish and bronze colour steel mounting. This adds a contemporary modern finish in its oval brown-copper silkette with bright copper liner.



Landscape texture plaster panel with gold striping is a beautiful scenic piece by Fred Cox. The treatment of the painting and the old gold finish frame portrays a timeless piece of art.



Inspired by the classic design of the 1950s, transmitting a feeling of comfort in its elongated curved back, wide arms and slim brass legs an armchair by Carmenes creates elegance and temperance.



Dougga Honed Limestone Mosaic by Country floors in flow with its colour palette adds vibrancy to the space giving it a very rustic appeal.



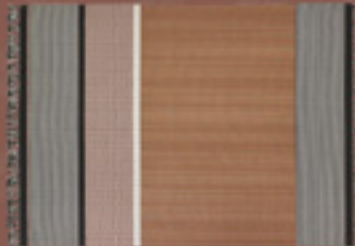
A whitewashed grainy wall treatment adds freshness in contrast to the mosaic tile and cement flooring, setting the base for a visual play of colours.



Serbian design handmade ceramic ribbed textural pots add freshness complimenting the floral patterns in the room.



Made from solid salvaged pine the Cardiff 7 Drawer Dresser in its natural patina finish has a very rustic timeless appeal to it, one that is robust and elegant.



San Francisco Woodnotes rug by Ritva Puotila is made of paper yarn and cotton. Its play of vertical and horizontal lines and colour dynamics replicate the colours and compliment the geometrics.





Made from Mango wood this Desi Meubles round iron side table with a wooden walnut tray like tabletop and black metal body brings in a retro touch.



A phenomenally crafted piece of art, a glazed pottery vase by Australian ceramic artists exhibited at the Kerrie Lowe Gallery 2016. This is a beautiful addition unique in its distressed form and blends of colours.

NEHTAYA




ANEMONE | CAPRI ROSE | FLORAL | 112006   




KATYA | MAGENTA | BOTANICAL | 112028  

VALERIO | TEAL | TEXTURE |
109518   

QUINTON | RASPBERRY | TEXTURE
I 106133   

FABIO | TIFFANY | IMPRESSION | 112007   

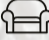
FRISCO | BYZANTIUM | GEOMETRIC | 112009   

RENATO | LAVENDER | GEOMETRIC | 112010   

Click on fabric to view details

◀ INDEX

NEHTAYA


ANEMONE | FAWN | FLORAL | 112011   

KATYA | ECRU | BOTANICAL | 112029  

VALERIO | FAWN | TEXTURE |
109504   

QUINTON | FOSSIL | TEXTURE |
106125   

FABIO | SPRUCE | IMPRESSION | 112012   

FRISCO | ECRU | GEOMETRIC | 112014   

RENATO | APRICOT | GEOMETRIC | 112015   

Click on fabric to view details

◀ INDEX





CURTAINS/BLINDS
112011

RECOMMENDED
WALL TREATMENT

ACCENT

WALL
PAINT

ACCENT

WALL
PAINT

RECOMMENDED
PROPS

ACCENT CHAIR
112015

RECOMMENDED
FLOORING

CUSHIONS
112029

BED SPREAD
112012

THROW
109504

CUSHIONS
106125

RECOMMENDED RUG

MODERN NEOCLASSICAL



Inspired by fixtures found in industrial settings, with a vintage authenticity this classic pendant in iron patina finish and pewter shade with antique brass finished accents by RHBABY is just the perfect fit to space.



An elegant and timeless piece, a vintage-modern mirror by Way-fair creates a classic room.

With a similar texture to that of the wall covering, a statement sculpture of Mondragon pig on stick figurine finished with a purposefully distressed effect.



Abram Brass floor lamp by SI structure, its cone design detail brings a new playful take on the vintage form of the lamp. The base and the band form the exterior sides of the metal shade and are treated with oil rubbed bronze finish.



A small handmade Wabi-sabi Scrofizo vase in black replicates on the tonal balance, adding elements of art that bring in a sense of calm.

Abstract Black Grey textured backdrop gives the illusion of misty mountains creating a dreamy sophisticated space elevating the monochromatic theme.



Minimalist water colour poster in beige and black-framed in black wood.

Suggestive treatment for cushions with contrast piping to add dimension and keep it interesting.



A Fagundes Resin sitting Buddha in metal coated with silver complements the calm mystic serenity of the space.



Handwoven by natural seagrass, with a houseplant, is an easy way to give the room an instant update.



Cosmos side table by Life interiors leaves a timeless and complimentary statement to the room, complementing the interior in its white round terrazzo top and timber clad column base.



Made from aged brass base and a custom linen shade the Yama table lamp is a perfect accent to the bedside.



Clear cylindrical vase with beautiful succulent is a fine touch adding life to the smallest corners.



Seabrook black iron cabinet by the high street market is a modern vintage piece. Adding elegance to the space in its black iron frame with window-pane detail in contrast to its white interior.



A relaxed 1970s Geoffrey Harcourt lounge chair with a metal base makes its statement in its unique vintage and refined shape.



A cylindrical patterned rug in harmony to the sharp geometric pattern of the suggested chair upholstery creates a visual play.



Habitat Light grey stone slabs with silk finish by Atlas Concorde are a perfect touch, creating harmonious contrasts to the monochromatic texture black grey wall backdrop.



A zen-inspired worth platform bed by Mod-ernDigs, features low profile espresso hardwood frame with matching symmetrical nightstands finished in natural wood veneers. It blends into space with its elegant sophistication of form and function.

Ceramic vases by ceramist Tara Burk, a delightful touch to the room.



NEHTAYA

ANEMONE | BURNT ORANGE | FLORAL | 112016   




KATYA | RUSTIC GOLD | BOTANICAL | 112030  

VALERIO | PUMPKIN | TEXTURE |
109539   

QUINTON | OLIVE | TEXTURE
106120   

FABIO | QUARRY | IMPRESSION | 112017   

FRISCO | RUST | GEOMETRIC | 112019   

RENATO | GRASS | GEOMETRIC | 112020   

Click on fabric to view details

◀ INDEX



ANEMONE MORNING GLORY 112001

Specification

Design : ANEMONE
 Shade : MORNING GLORY
 Width : 141 cm
 Composition : 100% COTTON
 Repeat : H- 64.3 cm x W- 71 cm
 GSM : 235
 Martindale : 25000 rubs
 Wash Care : M/C WASH AT 30°C , IRONING-
 2 DOTS, HANG DRY ,DON'T
 TUMBLE DRY , DON'T BLEACH,
 CAN DRY CLEAN



Colour Way



◀◀ INDEX

◀◀ Back to Photo

◀◀ Back to Layer



KATYA GRANOLA 112026

Specification

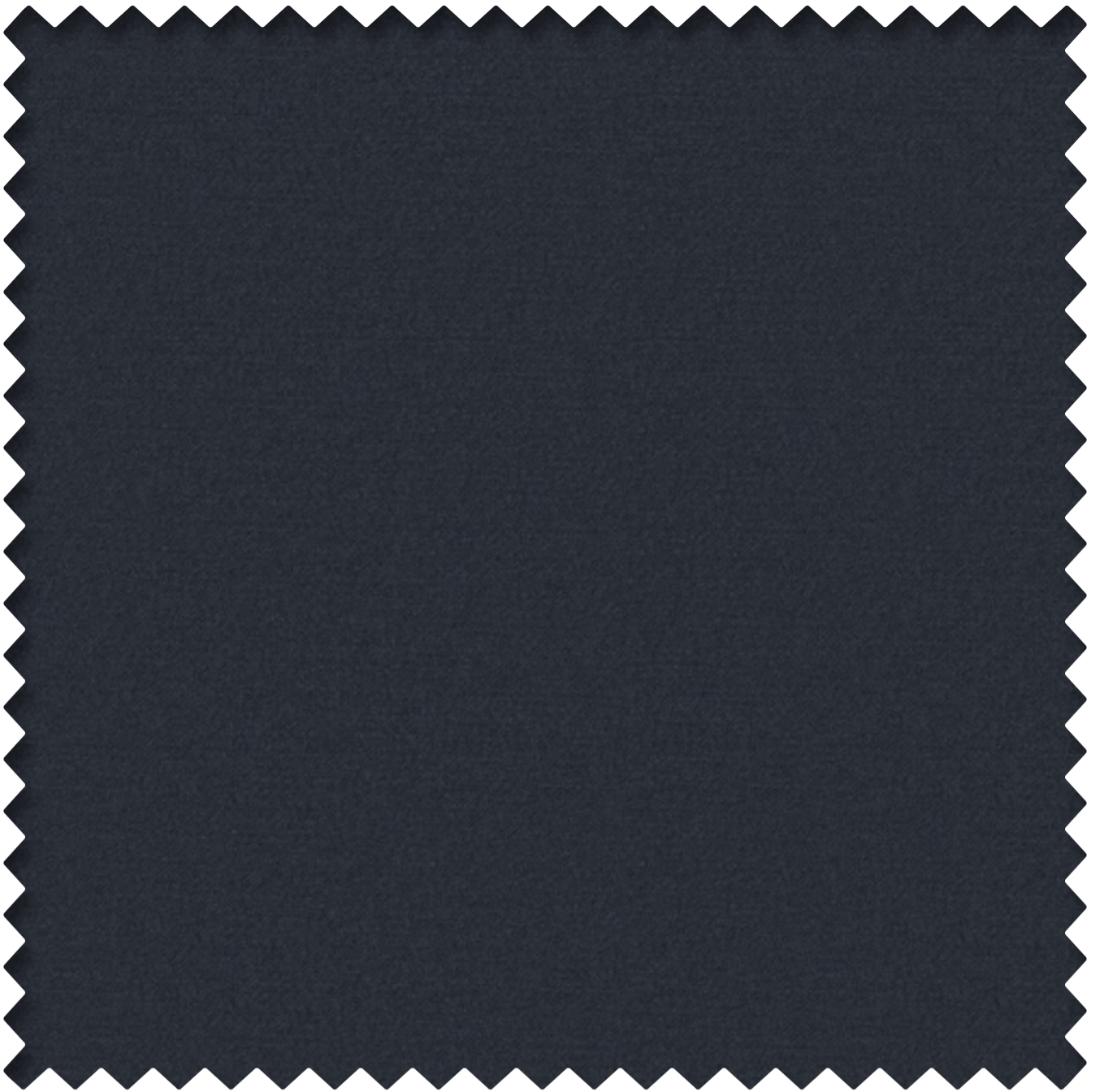
Design : KATYA
Shade : GRANOLA
Width : 137 cm
Composition : BASE- 54% POLYESTER, 46%
COTTON, EMB- 100% VISCOSE
Repeat : H- 68 cm x W- 32 cm
GSM : 402
Martindale : N/A
Wash Care : ONLY DRY CLEAN, IRON 2 DOTS,
DON'T BLEACH, DON'T TUMBLE,
HANG DRY



Colour Way



◀◀ Back to Layer



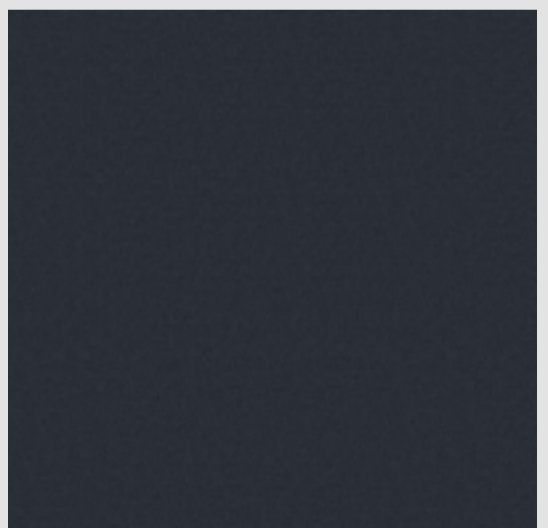
VALERIO SPRUCE 109537

Specification

Design : VALERIO
Shade : SPRUCE
Width : 140 cm
Composition : 100% POLYESTER
Repeat : H- N/A x W- N/A
GSM : 400
Martindale : 55000 rubs
Wash Care : M/C WASH AT 30°C , IRONING-
2 DOTS, HANG DRY ,DON'T
TUMBLE DRY , DON'T BLEACH,
CAN DRY CLEAN



Colour Way



◀◀ Back to Photo

◀◀ Back to Layer



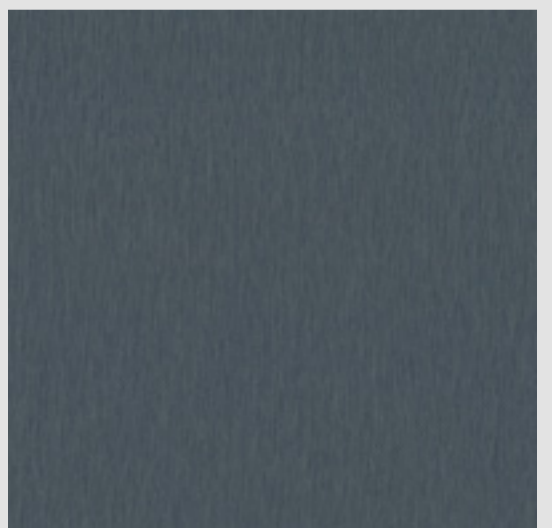
QUINTON COBALT 106124

Specification

Design : QUINTON
Shade : COBALT
Width : 140 cm
Composition : 100% POLYESTER
Repeat : H- N/A x W- N/A
GSM : 303
Martindale : 25000 rubs
Wash Care : M/C WASH AT 40°C , IRONING-
2 DOTS, HANG DRY ,DON'T
TUMBLE DRY, DON'T BLEACH,
CAN DRY CLEAN

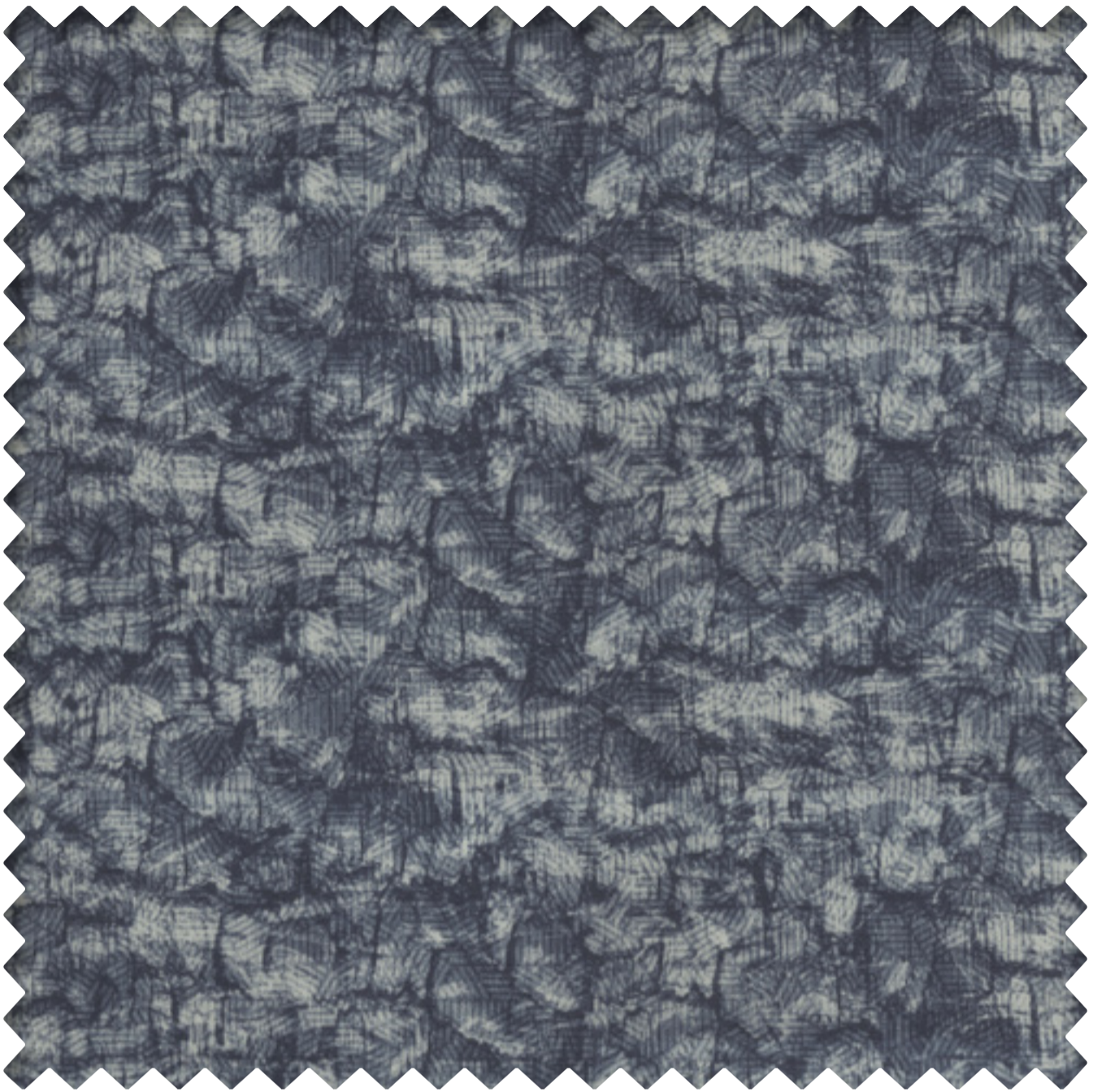


Colour Way



◀◀ Back to Photo

◀◀ Back to Layer



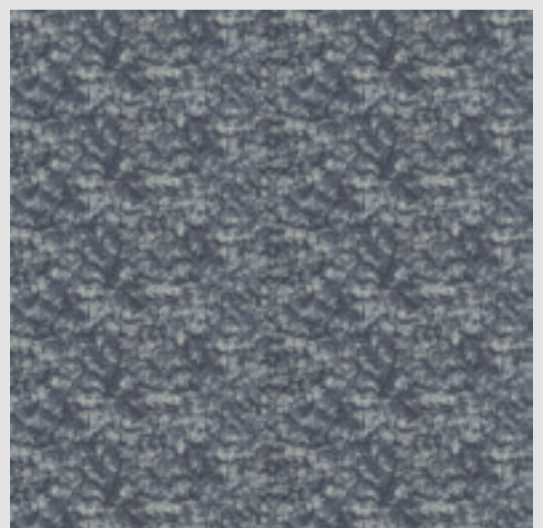
FABIO SHADOW 112002

Specification

Design : FABIO
Shade : SHADOW
Width : 139.5 cm
Composition : 64% POLYESTER, 12% COTTON,
12% LINEN, 12% VISCOSE
Repeat : H- 29.5 cm x W- 75 cm
GSM : 435
Martindale : 50000 rubs
Wash Care : HAND WASH AT 30°C, IRON 2
DOTS, DON'T BLEACH, DON'T
TUMBLE, HANG DRY, CAN DRY
CLEAN



Colour Way



◀◀ Back to Photo

◀◀ Back to Layer



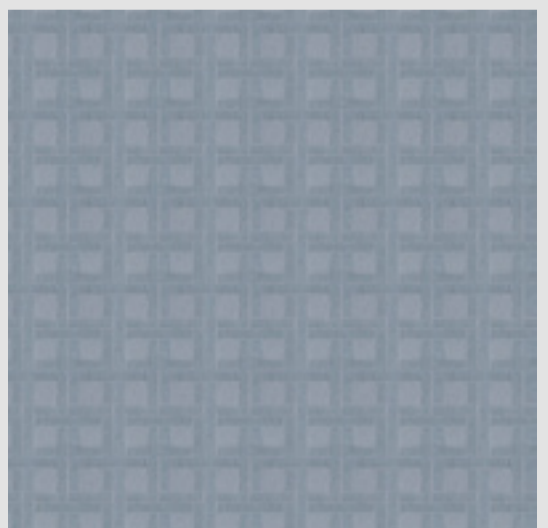
FRISCO YALE 112004

Specification

Design : FRISCO
Shade : YALE
Width : 139.5 cm
Composition : 56% COTTON, 44% POLYESTER
Repeat : H- 24 cm x W- 23 cm
GSM : 310
Martindale : 15000 rubs
Wash Care : M/C WASH AT 30°C , IRONING-
2 DOTS, HANG DRY ,DON'T
TUMBLE DRY , DON'T BLEACH,
CAN DRY CLEAN



Colour Way



◀◀ Back to Photo

◀◀ Back to Layer



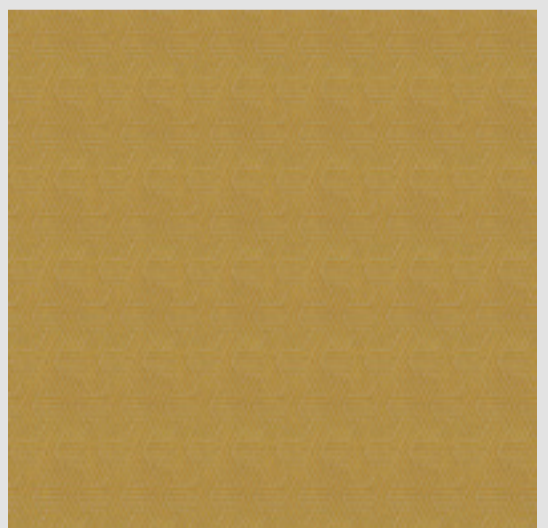
RENATO TUSCAN 112005

Specification

Design : RENATO
Shade : TUSCAN
Width : 131.5 cm
Composition : 64% POLYESTER, 19% COTTON,
17% VISCOSE
Repeat : H- 22 cm x W- 11 cm
GSM : 423
Martindale : 25000 rubs
Wash Care : M/C WASH AT 30°C , IRONING-
2 DOTS, HANG DRY ,DON'T
TUMBLE DRY , DON'T BLEACH,
CAN DRY CLEAN



Colour Way



◀◀ Back to Photo

◀◀ Back to Layer



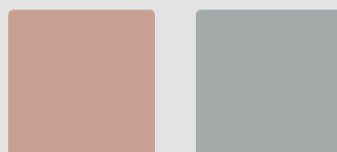
ANEMONE SALMON 112021

Specification

Design : ANEMONE
 Shade : SALMON
 Width : 141 cm
 Composition : 100% COTTON
 Repeat : H- 64.3 cm x W- 71 cm
 GSM : 235
 Martindale : 25000 rubs
 Wash Care : M/C WASH AT 30°C , IRONING-
 2 DOTS, HANG DRY ,DON'T
 TUMBLE DRY , DON'T BLEACH,
 CAN DRY CLEAN



Colour Way



◀◀ Back to Layer



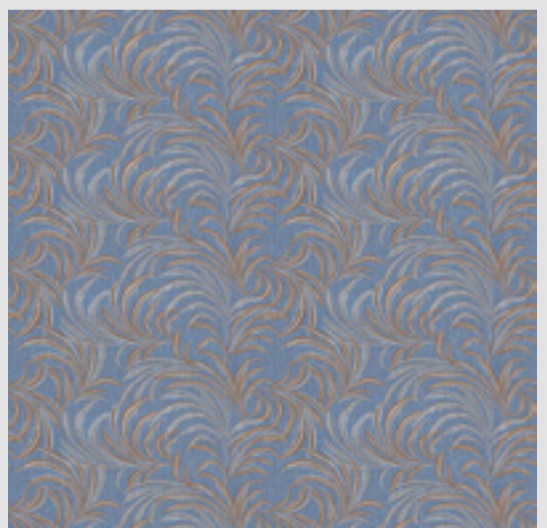
KATYA SCARLET BLUE 112027

Specification

Design : KATYA
Shade : SCARLET BLUE
Width : 137 cm
Composition : BASE- 54% POLYESTER, 46%
COTTON, EMB- 100% VISCOSE
Repeat : H- 68 cm x W- 32 cm
GSM : 402
Martindale : N/A
Wash Care : ONLY DRY CLEAN, IRON 2 DOTS,
DON'T BLEACH, DON'T TUMBLE,
HANG DRY



Colour Way



◀◀ Back to Layer



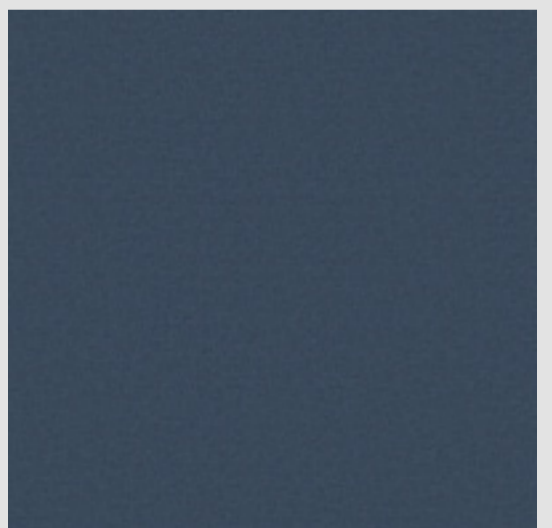
VALERIO PIGEON 109525

Specification

Design : VALERIO
Shade : PIGEON
Width : 140 cm
Composition : 100% POLYESTER
Repeat : H- N/A x W- N/A
GSM : 400
Martindale : 55000 rubs
Wash Care : M/C WASH AT 30°C , IRONING-
2 DOTS, HANG DRY ,DON'T
TUMBLE DRY , DON'T BLEACH,
CAN DRY CLEAN



Colour Way



◀◀ Back to Layer



QUINTON FERROUS 106115

Specification

Design : QUINTON
Shade : FERROUS
Width : 140 cm
Composition : 100% POLYESTER
Repeat : H- N/A x W- N/A
GSM : 303
Martindale : 25000 rubs
Wash Care : M/C WASH AT 40°C , IRONING-
2 DOTS, HANG DRY ,DON'T
TUMBLE DRY, DON'T BLEACH,
CAN DRY CLEAN



Colour Way



◀◀ Back to Layer



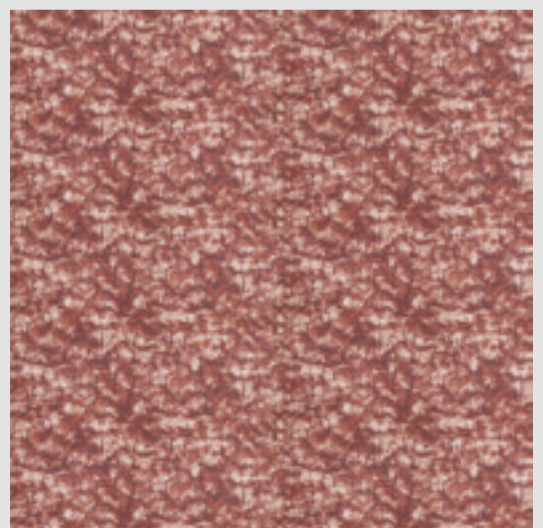
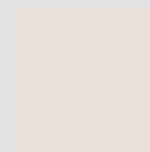
FABIO PANSY 112022

Specification

Design : FABIO
Shade : PANSY
Width : 139.5 cm
Composition : 64% POLYESTER, 12% COTTON,
12% LINEN, 12% VISCOSE
Repeat : H- 29.5 cm x W- 75 cm
GSM : 435
Martindale : 50000 rubs
Wash Care : HAND WASH AT 30°C, IRON 2
DOTS, DON'T BLEACH, DON'T
TUMBLE, HANG DRY, CAN DRY
CLEAN



Colour Way



◀◀ Back to Layer



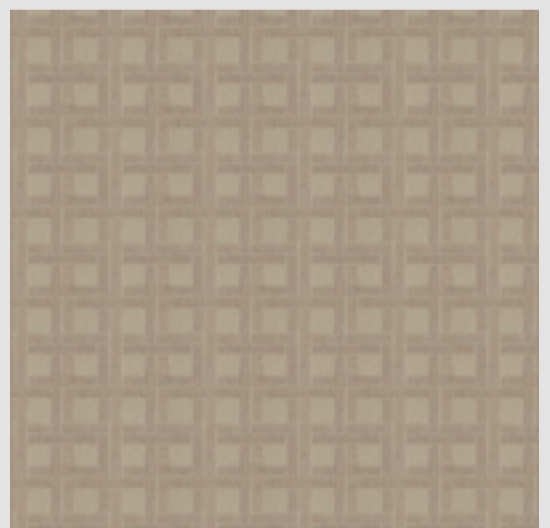
FRISCO NUDE 112024

Specification

Design : FRISCO
Shade : NUDE
Width : 139.5 cm
Composition : 56% COTTON, 44% POLYESTER
Repeat : H- 24 cm x W- 23 cm
GSM : 310
Martindale : 15000 rubs
Wash Care : M/C WASH AT 30°C , IRONING-
2 DOTS, HANG DRY ,DON'T
TUMBLE DRY , DON'T BLEACH,
CAN DRY CLEAN



Colour Way



◀◀ Back to Layer



RENATO CADET BLUE 112025

Specification

Design : RENATO
Shade : CADET BLUE
Width : 131.5 cm
Composition : 64% POLYESTER, 19% COTTON,
17% VISCOSE
Repeat : H- 22 cm x W- 11 cm
GSM : 423
Martindale : 25000 rubs
Wash Care : M/C WASH AT 30°C , IRONING-
2 DOTS, HANG DRY ,DON'T
TUMBLE DRY , DON'T BLEACH,
CAN DRY CLEAN



Colour Way



◀◀ Back to Layer



ANEMONE CAPRI ROSE 112006

Specification

Design : ANEMONE
 Shade : CAPRI ROSE
 Width : 141 cm
 Composition : 100% COTTON
 Repeat : H- 64.3 cm x W- 71 cm
 GSM : 235
 Martindale : 25000 rubs
 Wash Care : M/C WASH AT 30°C , IRONING-
 2 DOTS, HANG DRY ,DON'T
 TUMBLE DRY , DON'T BLEACH,
 CAN DRY CLEAN



Colour Way



◀◀ Back to Layer



KATYA MAGENTA 112028

Specification

Design : KATYA
Shade : MAGENTA
Width : 137 cm
Composition : BASE- 54% POLYESTER, 46%
COTTON, EMB- 100% VISCOSE
Repeat : H- 68 cm x W- 32 cm
GSM : 402
Martindale : N/A
Wash Care : ONLY DRY CLEAN, IRON 2 DOTS,
DON'T BLEACH, DON'T TUMBLE,
HANG DRY



Colour Way



◀◀ Back to Styling Page

◀◀ Back to Photo

◀◀ Back to Layer



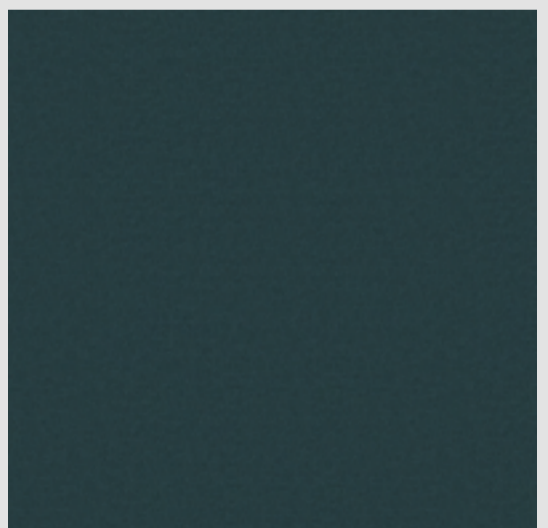
VALERIO TEAL 109518

Specification

Design : VALERIO
Shade : TEAL
Width : 140 cm
Composition : 100% POLYESTER
Repeat : H- N/A x W- N/A
GSM : 400
Martindale : 55000 rubs
Wash Care : M/C WASH AT 30°C , IRONING-
2 DOTS, HANG DRY ,DON'T
TUMBLE DRY , DON'T BLEACH,
CAN DRY CLEAN



Colour Way



◀◀ Back to Styling Page

◀◀ Back to Layer



QUINTON RASPBERRY 106133

Specification

Design : QUINTON
Shade : RASPBERRY
Width : 140 cm
Composition : 100% POLYESTER
Repeat : H- N/A x W- N/A
GSM : 303
Martindale : 25000 rubs
Wash Care : M/C WASH AT 40°C , IRONING-
2 DOTS, HANG DRY ,DON'T
TUMBLE DRY, DON'T BLEACH,
CAN DRY CLEAN



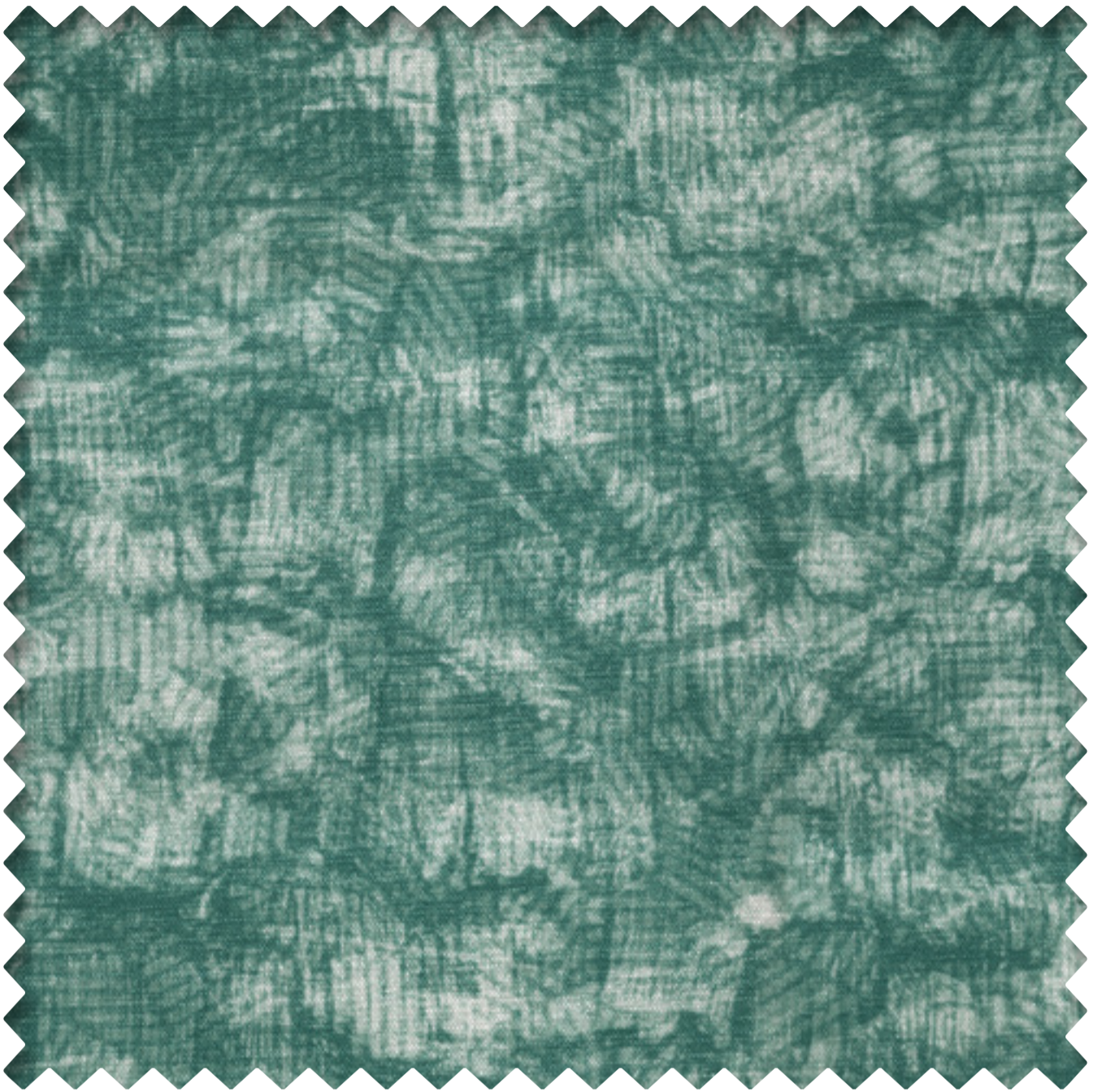
Colour Way



◀◀ Back to Styling Page

◀◀ Back to Photo

◀◀ Back to Layer



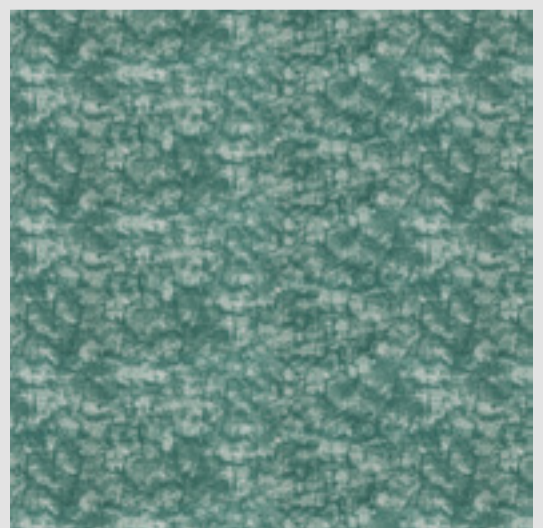
FABIO TIFFANY 112007

Specification

Design : FABIO
Shade : TIFFANY
Width : 139.5 cm
Composition : 64% POLYESTER, 12% COTTON,
12% LINEN, 12% VISCOSE
Repeat : H- 29.5 cm x W- 75 cm
GSM : 435
Martindale : 50000 rubs
Wash Care : HAND WASH AT 30°C, IRON 2
DOTS, DON'T BLEACH, DON'T
TUMBLE, HANG DRY, CAN DRY
CLEAN



Colour Way



◀◀ Back to Styling Page

◀◀ Back to Layer



FRISCO BYZANTIUM 112009

Specification

Design : FRISCO
 Shade : BYZANTIUM
 Width : 139.5 cm
 Composition : 56% COTTON, 44% POLYESTER
 Repeat : H- 24 cm x W- 23 cm
 GSM : 310
 Martindale : 15000 rubs
 Wash Care : M/C WASH AT 30°C , IRONING-
 2 DOTS, HANG DRY ,DON'T
 TUMBLE DRY , DON'T BLEACH,
 CAN DRY CLEAN



Colour Way



◀◀ Back to Layer



RENATO LAVENDER 112010

Specification

Design : RENATO
Shade : LAVENDER
Width : 131.5 cm
Composition : 64% POLYESTER, 19% COTTON,
17% VISCOSE
Repeat : H- 22 cm x W- 11 cm
GSM : 423
Martindale : 25000 rubs
Wash Care : M/C WASH AT 30°C , IRONING-
2 DOTS, HANG DRY ,DON'T
TUMBLE DRY , DON'T BLEACH,
CAN DRY CLEAN



Colour Way



◀◀ Back to Styling Page

◀◀ Back to Photo

◀◀ Back to Layer



ANEMONE FAWN 112011

Specification

Design : ANEMONE
 Shade : FAWN
 Width : 141 cm
 Composition : 100% COTTON
 Repeat : H- 64.3 cm x W- 71 cm
 GSM : 235
 Martindale : 25000 rubs
 Wash Care : M/C WASH AT 30°C , IRONING-
 2 DOTS, HANG DRY ,DON'T
 TUMBLE DRY , DON'T BLEACH,
 CAN DRY CLEAN



Colour Way



◀◀ Back to Styling Page

◀◀ Back to Layer



KATYA ECRU 112029

Specification

Design : KATYA
Shade : ECRU
Width : 137 cm
Composition : BASE- 54% POLYESTER, 46%
COTTON, EMB- 100% VISCOSE
Repeat : H- 68 cm x W- 32 cm
GSM : 402
Martindale : N/A
Wash Care : ONLY DRY CLEAN, IRON 2 DOTS,
DON'T BLEACH, DON'T TUMBLE,
HANG DRY



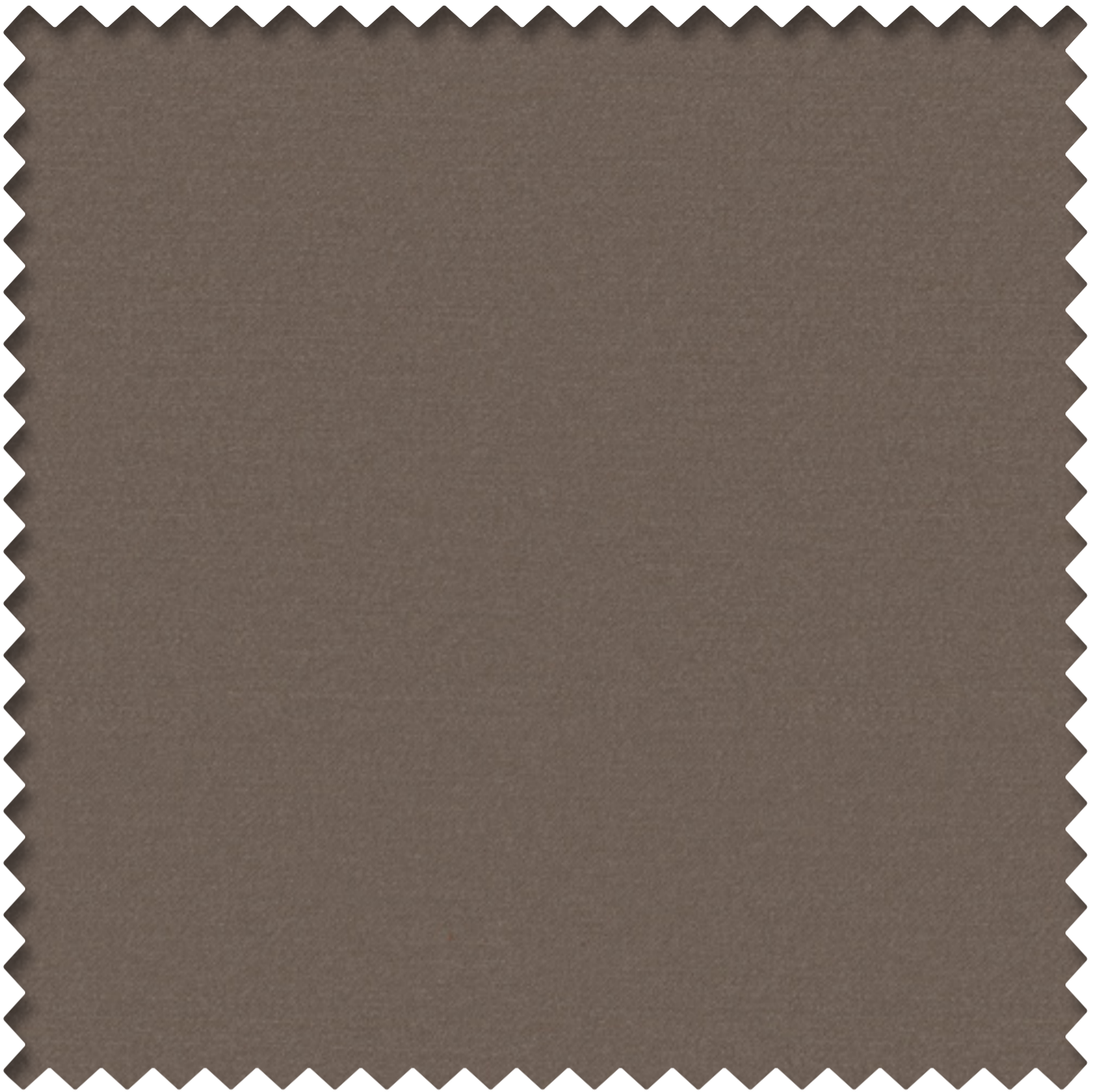
Colour Way



◀◀ Back to Styling Page

◀◀ Back to Photo

◀◀ Back to Layer



VALERIO FAWN 109504

Specification

Design : VALERIO
Shade : FAWN
Width : 140 cm
Composition : 100% POLYESTER
Repeat : H- N/A x W- N/A
GSM : 400
Martindale : 55000 rubs
Wash Care : M/C WASH AT 30°C , IRONING-
2 DOTS, HANG DRY ,DON'T
TUMBLE DRY , DON'T BLEACH,
CAN DRY CLEAN



Colour Way



◀◀ Back to Styling Page

◀◀ Back to Layer



QUINTON FOSSIL 106125

Specification

Design : QUINTON
Shade : FOSSIL
Width : 140 cm
Composition : 100% POLYESTER
Repeat : H- N/A x W- N/A
GSM : 303
Martindale : 25000 rubs
Wash Care : M/C WASH AT 40°C , IRONING-
2 DOTS, HANG DRY ,DON'T
TUMBLE DRY, DON'T BLEACH,
CAN DRY CLEAN



Colour Way



◀◀ Back to Styling Page

◀◀ Back to Layer



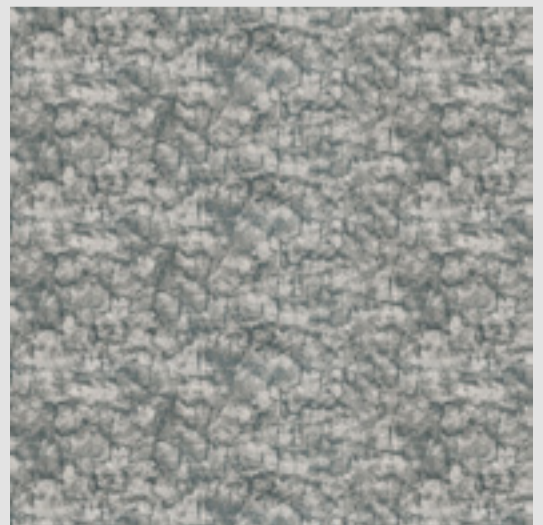
FABIO SPRUCE 112012

Specification

Design : FABIO
Shade : SPRUCE
Width : 139.5 cm
Composition : 64% POLYESTER, 12% COTTON,
12% LINEN, 12% VISCOSE
Repeat : H- 29.5 cm x W- 75 cm
GSM : 435
Martindale : 50000 rubs
Wash Care : HAND WASH AT 30°C, IRON 2
DOTS, DON'T BLEACH, DON'T
TUMBLE, HANG DRY, CAN DRY
CLEAN



Colour Way



◀◀ Back to Styling Page

◀◀ Back to Layer



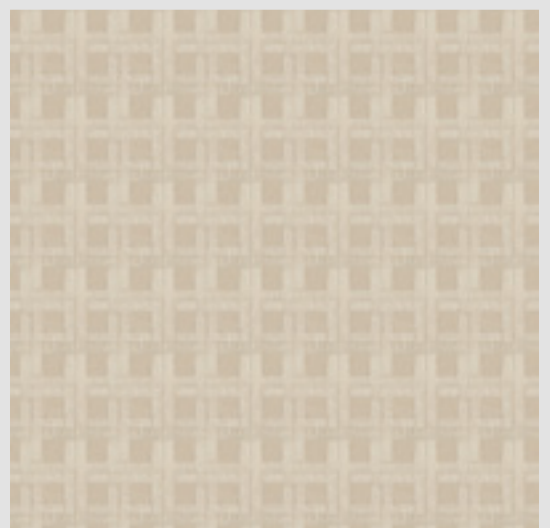
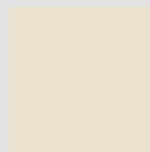
FRISCO ECRU 112014

Specification

Design : FRISCO
Shade : ECRU
Width : 139.5 cm
Composition : 56% COTTON, 44% POLYESTER
Repeat : H- 24 cm x W- 23 cm
GSM : 310
Martindale : 15000 rubs
Wash Care : M/C WASH AT 30°C , IRONING-
2 DOTS, HANG DRY ,DON'T
TUMBLE DRY , DON'T BLEACH,
CAN DRY CLEAN



Colour Way



◀◀ Back to Layer



RENATO APRICOT 112015

Specification

Design : RENATO
Shade : APRICOT
Width : 131.5 cm
Composition : 64% POLYESTER, 19% COTTON,
17% VISCOSE
Repeat : H- 22 cm x W- 11 cm
GSM : 423
Martindale : 25000 rubs
Wash Care : M/C WASH AT 30°C , IRONING-
2 DOTS, HANG DRY ,DON'T
TUMBLE DRY , DON'T BLEACH,
CAN DRY CLEAN



Colour Way



◀◀ Back to Styling Page

◀◀ Back to Layer



ANEMONE BURNT ORANGE 112016

Specification

Design : ANEMONE
 Shade : BURNT ORANGE
 Width : 141 cm
 Composition : 100% COTTON
 Repeat : H- 64.3 cm x W- 71 cm
 GSM : 235
 Martindale : 25000 rubs
 Wash Care : M/C WASH AT 30°C , IRONING-
 2 DOTS, HANG DRY ,DON'T
 TUMBLE DRY , DON'T BLEACH,
 CAN DRY CLEAN



Colour Way



◀◀ Back to Styling Page

◀◀ Back to Layer



KATYA RUSTIC GOLD 112030

Specification

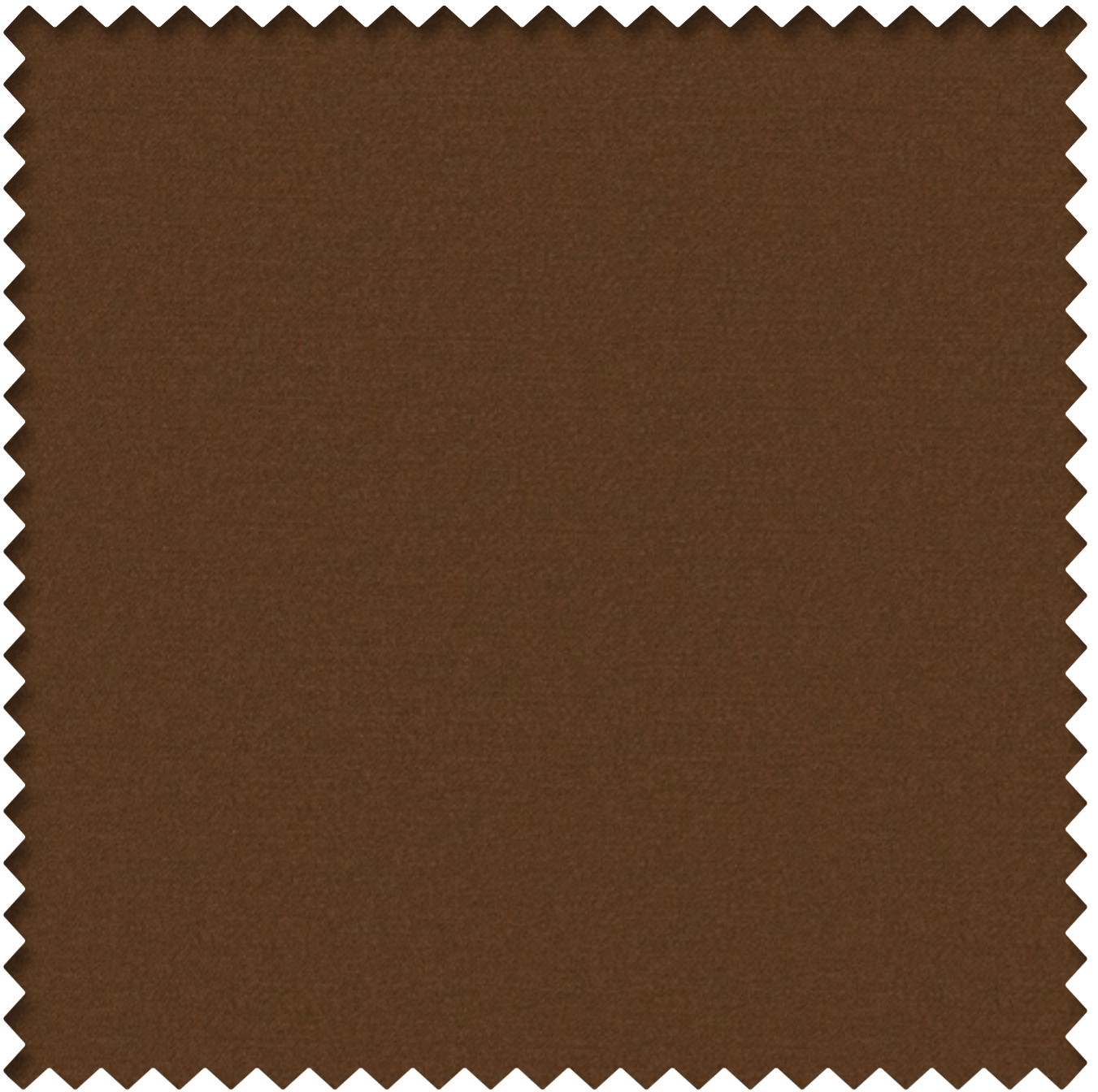
Design : KATYA
Shade : RUSTIC GOLD
Width : 137 cm
Composition : BASE- 54% POLYESTER, 46%
COTTON, EMB- 100% VISCOSE
Repeat : H- 68 cm x W- 32 cm
GSM : 402
Martindale : N/A
Wash Care : ONLY DRY CLEAN, IRON 2 DOTS,
DON'T BLEACH, DON'T TUMBLE,
HANG DRY



Colour Way



◀◀ Back to Layer



VALERIO PUMPKIN 109539

Specification

Design : VALERIO
Shade : PUMPKIN
Width : 140 cm
Composition : 100% POLYESTER
Repeat : H- N/A x W- N/A
GSM : 400
Martindale : 55000 rubs
Wash Care : M/C WASH AT 30°C , IRONING-
2 DOTS, HANG DRY ,DON'T
TUMBLE DRY , DON'T BLEACH,
CAN DRY CLEAN



Colour Way



◀◀ Back to Styling Page

◀◀ Back to Layer



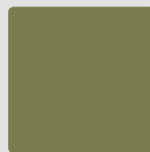
QUINTON OLIVE 106120

Specification

Design : QUINTON
Shade : OLIVE
Width : 140 cm
Composition : 100% POLYESTER
Repeat : H- N/A x W- N/A
GSM : 303
Martindale : 25000 rubs
Wash Care : M/C WASH AT 40°C , IRONING-
2 DOTS, HANG DRY ,DON'T
TUMBLE DRY, DON'T BLEACH,
CAN DRY CLEAN

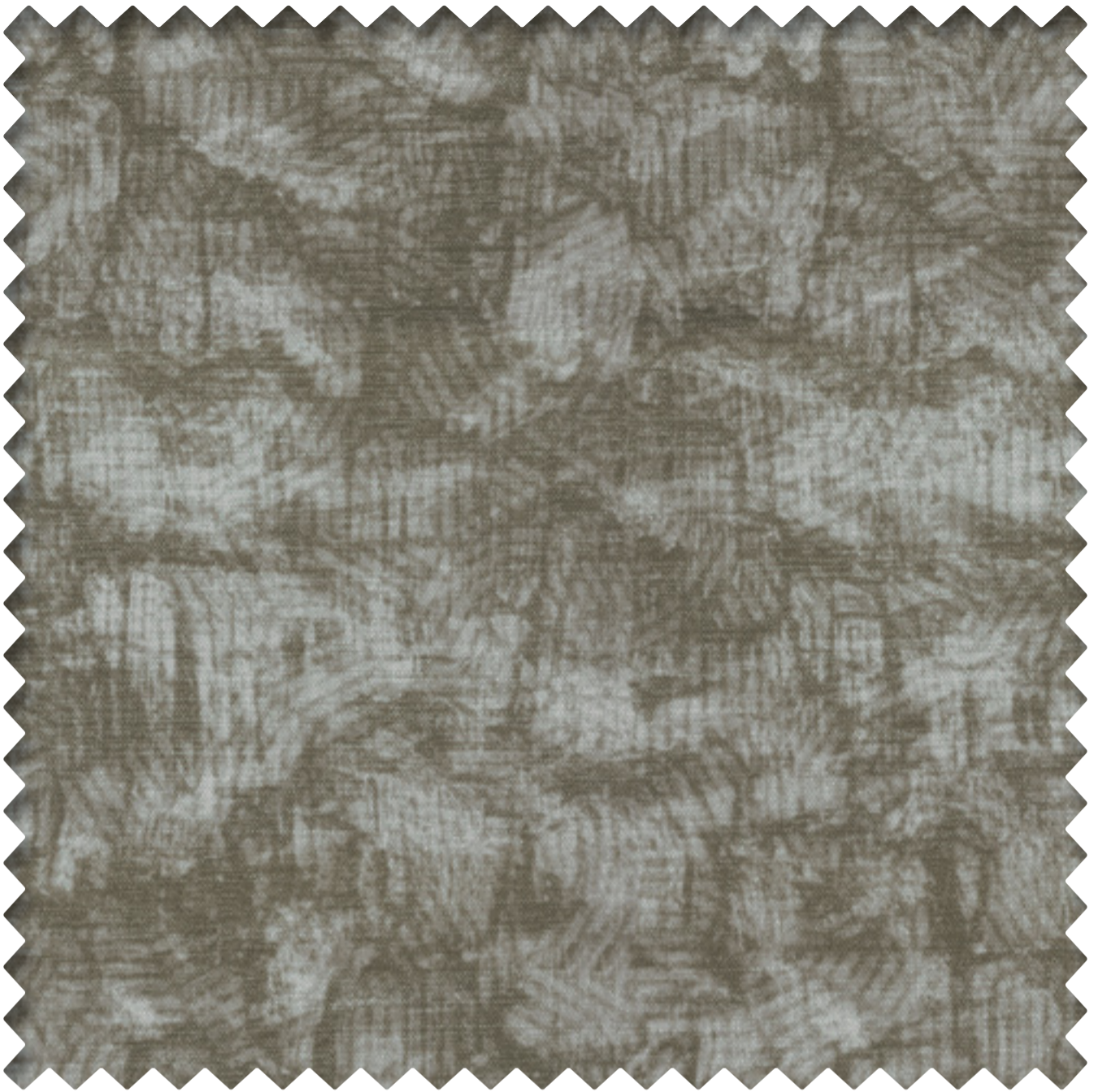


Colour Way



◀◀ Back to Styling Page

◀◀ Back to Layer



FABIO QUARRY 112017

Specification

Design : FABIO
Shade : QUARRY
Width : 139.5 cm
Composition : 64% POLYESTER, 12% COTTON,
12% LINEN, 12% VISCOSE
Repeat : H- 29.5 cm x W- 75 cm
GSM : 435
Martindale : 50000 rubs
Wash Care : HAND WASH AT 30°C, IRON 2
DOTS, DON'T BLEACH, DON'T
TUMBLE, HANG DRY, CAN DRY
CLEAN



Colour Way



◀◀ Back to Layer



FRISCO RUST 112019

Specification

Design : FRISCO
Shade : RUST
Width : 139.5 cm
Composition : 56% COTTON, 44% POLYESTER
Repeat : H- 24 cm x W- 23 cm
GSM : 310
Martindale : 15000 rubs
Wash Care : M/C WASH AT 30°C , IRONING-
2 DOTS, HANG DRY ,DON'T
TUMBLE DRY , DON'T BLEACH,
CAN DRY CLEAN



Colour Way



◀◀ Back to Styling Page

◀◀ Back to Layer



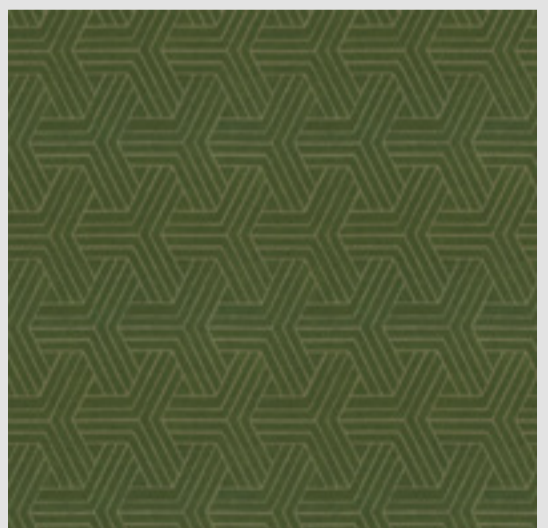
RENATO GRASS 112020

Specification

Design : RENATO
Shade : GRASS
Width : 131.5 cm
Composition : 64% POLYESTER, 19% COTTON,
17% VISCOSE
Repeat : H- 22 cm x W- 11 cm
GSM : 423
Martindale : 25000 rubs
Wash Care : M/C WASH AT 30°C , IRONING-
2 DOTS, HANG DRY ,DON'T
TUMBLE DRY , DON'T BLEACH,
CAN DRY CLEAN



Colour Way



◀◀ Back to Layer

QUALITY ASSURANCE BY



Design : ANEMONE

TEST NAME	VALUE
Martindale	Result
No. of Rubs for the End Point	25000 rubs

Design : FABIO

TEST NAME	VALUE
Martindale	Result
No. of Rubs for the End Point	50000 rubs

Design : FRISCO

TEST NAME	VALUE
Martindale	Result
No. of Rubs for the End Point	15000 rubs

Design : KATYA

TEST NAME	VALUE
Martindale	Result
No. of Rubs for the End Point	N/A

QUALITY ASSURANCE BY



Design : QUINTON

TEST NAME	VALUE
Martindale	Result
No. of Rubs for the End Point	25000 rubs

Design : RENATO

TEST NAME	VALUE
Martindale	Result
No. of Rubs for the End Point	25000 rubs

Design : VALERIO

TEST NAME	VALUE
Martindale	Result
No. of Rubs for the End Point	55000 rubs



PURE[™]
FINE FABRIC · FINE LIVING

apröyale
furnishing by **ap** asianpaints

Fabric Treatment Available on Request

- FLAME RETARDANT
- ANTIVIRAL
- EASY CLEAN

