



**PURE**<sup>™</sup>  
FINE FABRIC · FINE LIVING

**ap røyale**  
furnishing by ap asianpaints

**SANGANER**

ap asianpaints

# GUIDE TO USING THIS E-CATALOGUE

This Ecatalogue has built in links which when clicked will take to you relevant sections for easy accessibility.



Click on these sections to take you to its Fabric Swatch page for a detailed view.



Click on the button below to go back to its layers page



This Ecatalogue is best viewed at maximum brightness.

If you are viewing this on Android Phone please download the following App to experience the interactivity in this e-catalogue:

**Adobe Acrobat Reader: PDF Viewer, Editor & Creator**

# GUIDE TO USING THIS E-CATALOGUE

Photo section pages also have built in links.



Click on fabrics seen in the Photo to take you to its Fabric Swatch page for a detailed view.

Specification		Colour Way	
Design	FILORA		
Shade	BEGONIA		
Width	133.5 cm		
Composition	100% POLYESTER		
Repeat	4 35 cm x 4 34.5 cm		
GSM	295		
Material	25000 rala		
Wash Care	30°C WASH AT 30°C, RINSE AT 30-2 DOCS, HANG DRY, DONT TUMBLE, DONT BRUSH, CARE DRY CLEAN		

Click on the button to go back to image

Back to Photo Back to Layer

## DISCLAIMER

Viewers of this e-catalogue are requested to refer to our **physical catalogs available at select stores** for more accurate representation of the end fabric, since there may be colour variation **due to different capabilities** of various display devices. We try to edit our images to show the samples as life-like as possible, but please note that the actual color of the physical fabric may vary from **what is seen** on your device.

# SANGANER

In the spirit of screen print and block print, Sanganer is an eye-catching collection. Much like the colours of a miniature painting the colours are fresh and vibrant. Its subdued texture adds to the timeless elegance of the fabric. It's ornate motifs and classic grandeur is a modern take on the traditional approach, creating exciting new spaces.

Inspired from the rich history of Sanganer, a village in the southern part of Jaipur, Rajasthan. It is well known for its centuries-old hand block printing technique. This collection comprises of 4 main designs which derive inspiration from the block prints and architectural details and wall paintings of its palaces.

The first design was an artwork inspired by the paintings found in the palaces which have beautifully withered alongside the passage of time. Made by hand and then translated digitally to add different textures. The butta design in this collection is also derived from this artwork.

Second is the hand-block printed peacock design inspired by the peacocks found around Rajasthan in the palace gardens. Made on a white cotton base each impression is different from the other depending on the intensity of pressure applied by the craftsman.

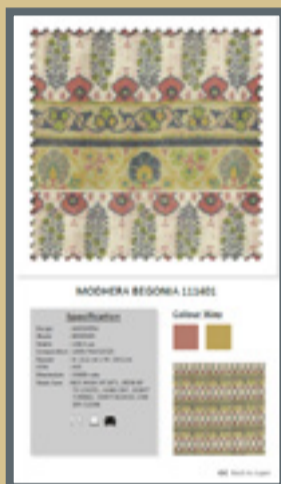
The third is a beautiful hand-painted classic floral design inspired by the wall paintings found in the palaces. This print was made on an offwhite base fabric and hand-painted in acrylic with a dry brush that enabled the sharpness of the lines.

# TABLE OF CONTENTS



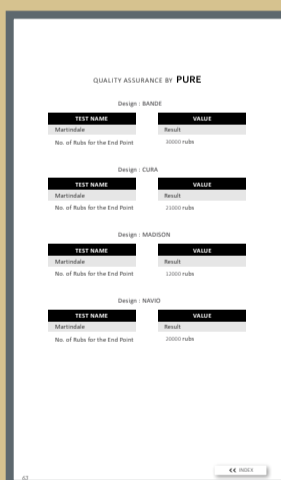
## Layers

Pg 7



## Fabric Swatches

Pg 15



## Technical Report

Pg 59



# SANGANER


MODHERA | BEGONIA | PATTERNED STRIPES | 111401   

VALERIO | SCARLET | PLAIN | 109508



MANAS | BEGONIA | TRELLIS | 111402






KALIKA | BEGONIA | MOTIF | 111403  

MANORA | BEGONIA | PATTERNED STRIPES | 111404   

BAKSHI | TANGERINE | PLAIN |  
112261   

MOLELA | MOSS | TEXTURED PLAIN |  
111112   




KONARK | GREEN | PATTERNED STRIPES | 111405   

FILORA | BEGONIA | FLORAL | 111406   

*Click on fabric to view details*

◀ INDEX

# SANGANER

MODHERA | SACRAMENTO | PATTERNED STRIPES | 111407   

VALERIO | LEMON CURRY | PLAIN | 109511   

MANAS | PINE | TRILLIS | 111408  

MANORA | SEA GREEN | TESSELTION | 111409   

KALIKA | CANARY | MOTIF | 111410  

BAKSHI | MILLET | PLAIN | 112227   

KONARK | JUNGLE | TESSELTION | 111411   

FILORA | JADE | FLORAL | 111412   




*Click on fabric to view details*

◀ INDEX





# SANGANER

MODHERA | HEATHER TEAL | PATTERNED STRIPES | 111419   

VALERIO | SEA PINE | PLAIN | 109519



MANAS | HEATHER TEAL | TRELIS | 111420  

KALIKA | HEATHER TEAL | MOTIF | 111421  

MANORA | HEATHER TEAL | TESSELTION | 111422   

MOLELA | ASH | TEXTURED PLAIN | 111101   

BAKSHI | SMOKE | PLAIN | 112251






KONARK | VERIDIAN | TESSELTION | 111423   

FILORA | HEATHER TEAL | FLORAL | 111424   

*Click on fabric to view details*

◀ INDEX

# SANGANER

MODHERA | INDIAN RED | PATTERNED STRIPES | 111413   

VALERIO | PEAR | PLAIN | 109514



MANAS | CREPE | TRELIS | 111414



KALIKA | FLEMINGO | MOTIF | 111415  


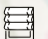

MANORA | CORAL REEF | TESSELTION | 111416   

MOLELA | ROSE | TEXTURED PLAIN |  
111126   

BAKSHI | OLIVE | PLAIN | 112228 



KONARK | CRIMSON | TESSELTION | 111417   

FILORA | SALMON | FLORAL | 111418   

*Click on fabric to view details*

[◀ INDEX](#)



# SANGANER

MODHERA | AMETHYST | PATTERNED STRIPES | 111432   

VALERIO | WINE | PLAIN | 109532



MANAS | IRIS | TRELLIS | 111433 




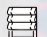

KALIKA | MAGENTA | MOTIF | 111434  

MANORA | IRIS | TESSELTION | 111435   

MOLELA | APRICOT | TEXTURED  
PLAIN | 111120   

BAKSHI | BLUEBERRY | PLAIN |  
112295   

KONARK | MUSTARD | TESSELTION | 111436   

FILORA | ORCHID | FLORAL | 111437   

*Click on fabric to view details*

◀ INDEX





## MODHERA BEGONIA 111401

### Specification

Design : MODHERA  
 Shade : BEGONIA  
 Width : 138.5 cm  
 Composition : 100% POLYESTER  
 Repeat : H- 32.6 cm x W- 34.6 cm  
 GSM : 450  
 Martindale : 25000 rubs  
 Wash Care : M/C WASH AT 30°C , IRON UP TO 2 DOTS , HANG DRY , DON'T TUMBLE , DON'T BLEACH, CAN DRY CLEAN



### Colour Way

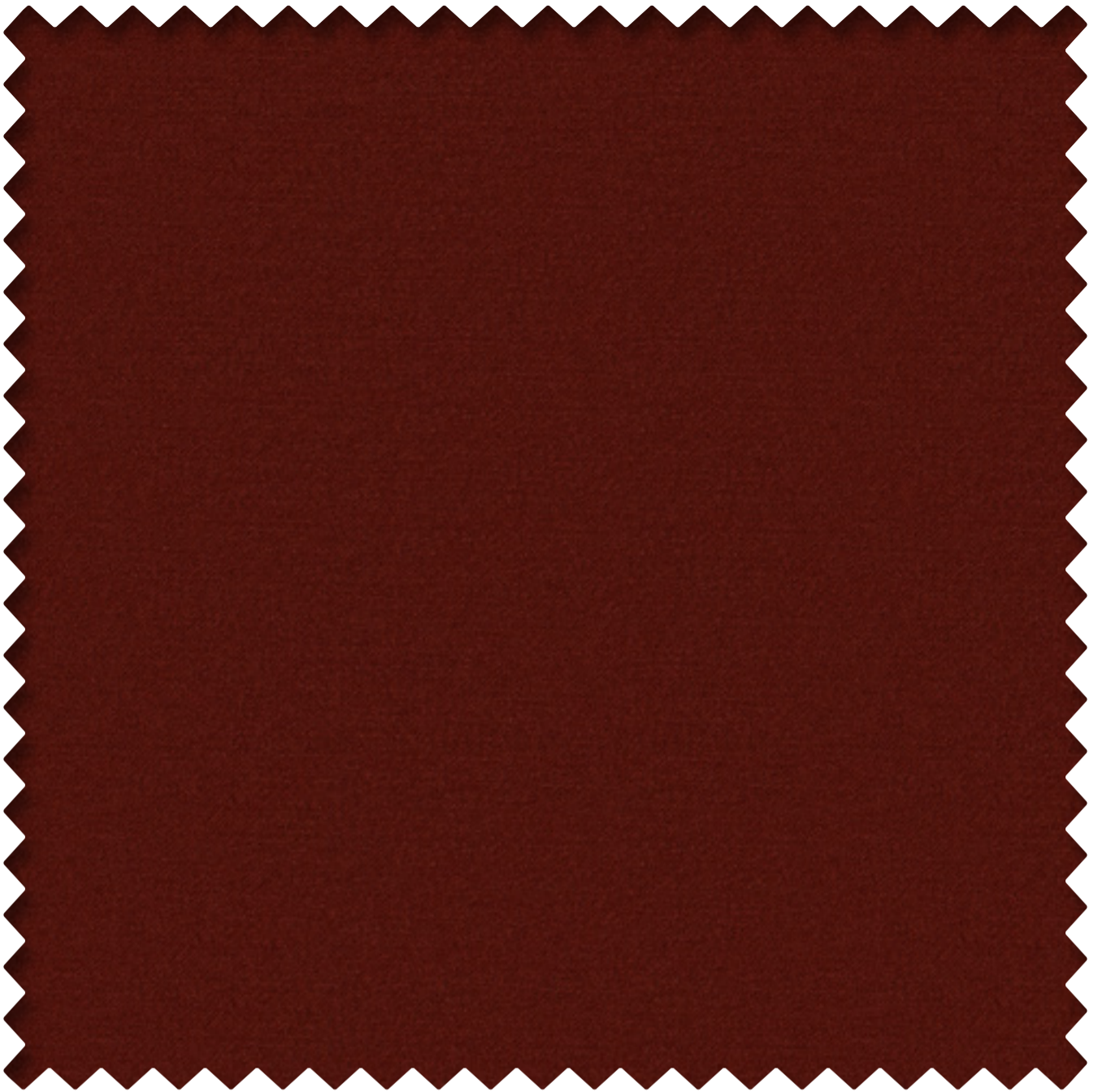


◀◀ INDEX

◀◀ Back to Photo

2

◀◀ Back to Layer



## VALERIO SCARLET 109508

### Specification

Design : VALERIO  
Shade : SCARLET  
Width : 140 cm  
Composition : 100% POLYESTER  
Repeat : H- N/A x W- N/A  
GSM : 400  
Martindale : 55000 rubs  
Wash Care : M/C WASH AT 30°C , IRON UP  
TO 2 DOTS, HANG DRY , DON'T  
TUMBLE, DON'T BLEACH, CAN  
DRY CLEAN



### Colour Way

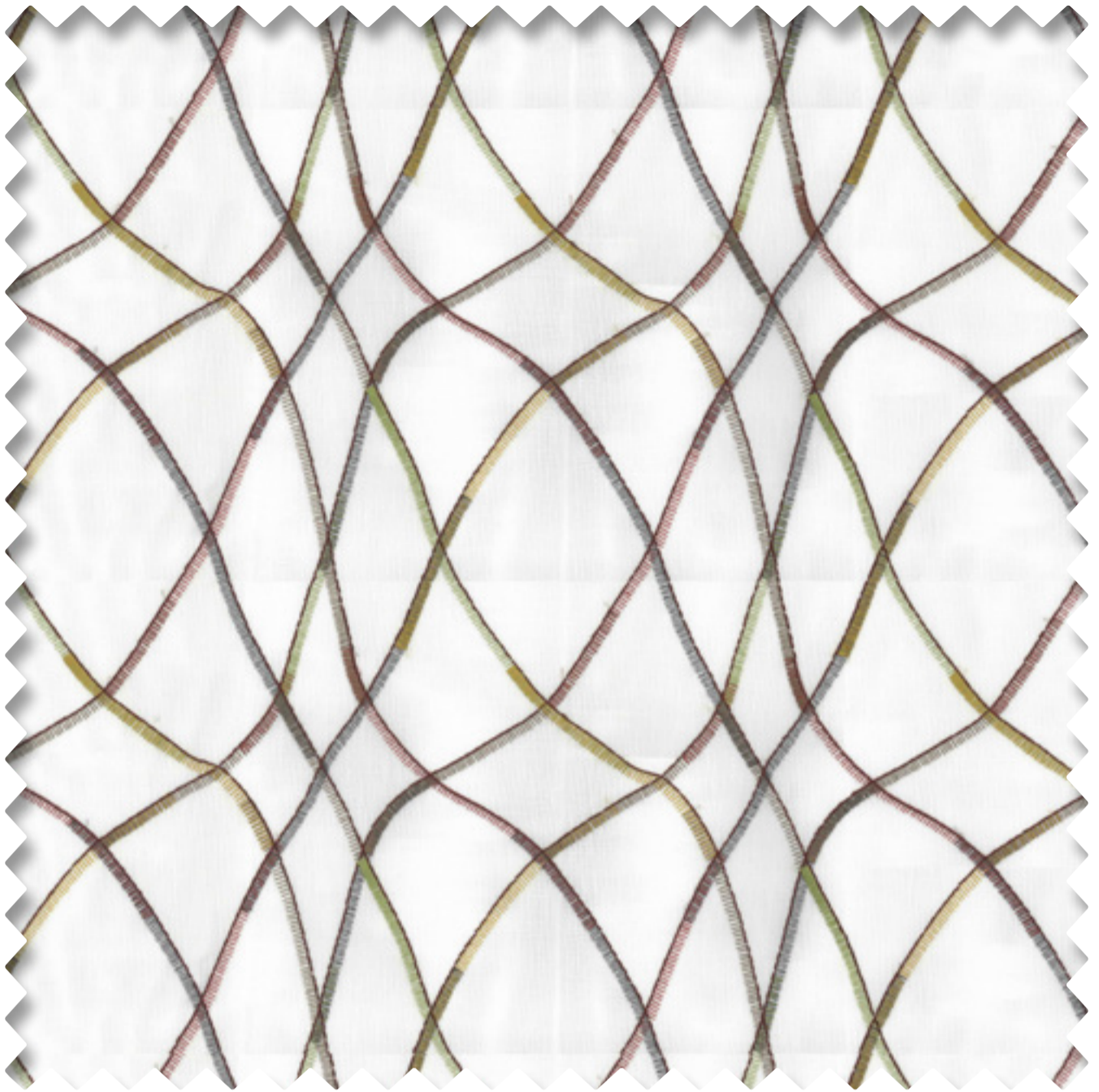


◀◀ Back to Photo

2

◀◀ Back to Layer





## MANAS BEGONIA 111402

### Specification

Design : MANAS  
 Shade : BEGONIA  
 Width : 137 cm  
 Composition : Base - 51% COTTON, 49%  
 POLYSTER, Emb - 100% VISCOSE  
 Repeat : H- 23.8 cm x W- 22.8 cm  
 GSM : 121  
 Martindale : N/A  
 Wash Care : ONLY DRY CLEAN, IRON-STEAM  
 IRON, DON'T BLEACH, DON'T  
 TUMBLE, HANG DRY



### Colour Way



◀◀ Back to Photo

◀◀ Back to Layer



## KALIKA BEGONIA 111403

### Specification

Design : KALIKA  
 Shade : BEGONIA  
 Width : 139 cm  
 Composition : Base - 100% POLYSTER, Emb-  
 100% VISCOSE  
 Repeat : H- 23.6 cm x W- 23.2 cm  
 GSM : 335  
 Martindale : N/A  
 Wash Care : ONLY DRY CLEAN, IRON 2 DOTS,  
 DON'T BLEACH, DON'T TUMBLE,  
 HANG DRY



### Colour Way



◀◀ Back to Photo

◀◀ Back to Layer



## MANORA BEGONIA 111404

### Specification

Design : MANORA  
 Shade : BEGONIA  
 Width : 140 cm  
 Composition : 100% POLYESTER  
 Repeat : H- 46 cm x W- 46.5 cm  
 GSM : 295  
 Martindale : 25000 rubs  
 Wash Care : M/C WASH AT 30°C , IRON UP TO 2 DOTS , HANG DRY , DON'T TUMBLE , DON'T BLEACH, CAN DRY CLEAN



### Colour Way



◀◀ Back to Photo

◀◀ Back to Layer



## BAKSHI TANGERINE 112261

### Specification

Design : BAKSHI  
Shade : TANGERINE  
Width : 140 cm  
Composition : 100% POLYESTER  
Repeat : H- N/A x W- N/A  
GSM : 470  
Martindale : 305000 rubs  
Wash Care : ONLY DRY CLEAN, DON'T IRON,  
DON'T BLEACH, DON'T TUMBLE,  
HANG DRY, VACCUM CLEAN



### Colour Way



◀◀ Back to Photo

◀◀ Back to Layer



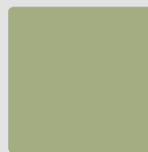
## MOLELA MOSS 111112

### Specification

Design : MOLELA  
Shade : MOSS  
Width : 143 cm  
Composition : 100% POLYESTER  
Repeat : H- N/A x W- N/A  
GSM : 377  
Martindale : 80000 rubs  
Wash Care : IRON UP TO 2 DOTS , HANG DRY,  
DON'T TUMBLE, DON'T BLEACH,  
CAN DRY CLEAN



### Colour Way



◀◀ Back to Photo

◀◀ Back to Layer



## KONARK GREEN 111405

### Specification

Design : KONARK  
Shade : GREEN  
Width : 140 cm  
Composition : 100% POLYESTER  
Repeat : H- 45.5 cm x W- 46.7 cm  
GSM : 295  
Martindale : 25000 rubs  
Wash Care : M/C WASH AT 30°C , IRON UP TO 2 DOTS , HANG DRY , DON'T TUMBLE , DON'T BLEACH, CAN DRY CLEAN



### Colour Way



◀ Back to Layer



## FILORA BEGONIA 111406

### Specification

Design : FILORA  
 Shade : BEGONIA  
 Width : 139.5 cm  
 Composition : 100% POLYESTER  
 Repeat : H- 35 cm x W- 34.9 cm  
 GSM : 295  
 Martindale : 25000 rubs  
 Wash Care : M/C WASH AT 30°C , IRON UP  
 TO 2 DOTS , HANG DRY , DON'T  
 TUMBLE , DON'T BLEACH, CAN  
 DRY CLEAN



### Colour Way



◀◀ Back to Photo

◀◀ Back to Layer



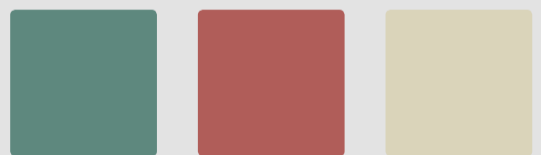
## MODHERA SACRAMENTO 111407

### Specification

Design : MODHERA  
 Shade : SACRAMENTO  
 Width : 138.5 cm  
 Composition : 100% POLYESTER  
 Repeat : H- 32.6 cm x W- 34.6 cm  
 GSM : 450  
 Martindale : 25000 rubs  
 Wash Care : M/C WASH AT 30°C , IRON UP TO 2 DOTS , HANG DRY , DON'T TUMBLE , DON'T BLEACH, CAN DRY CLEAN

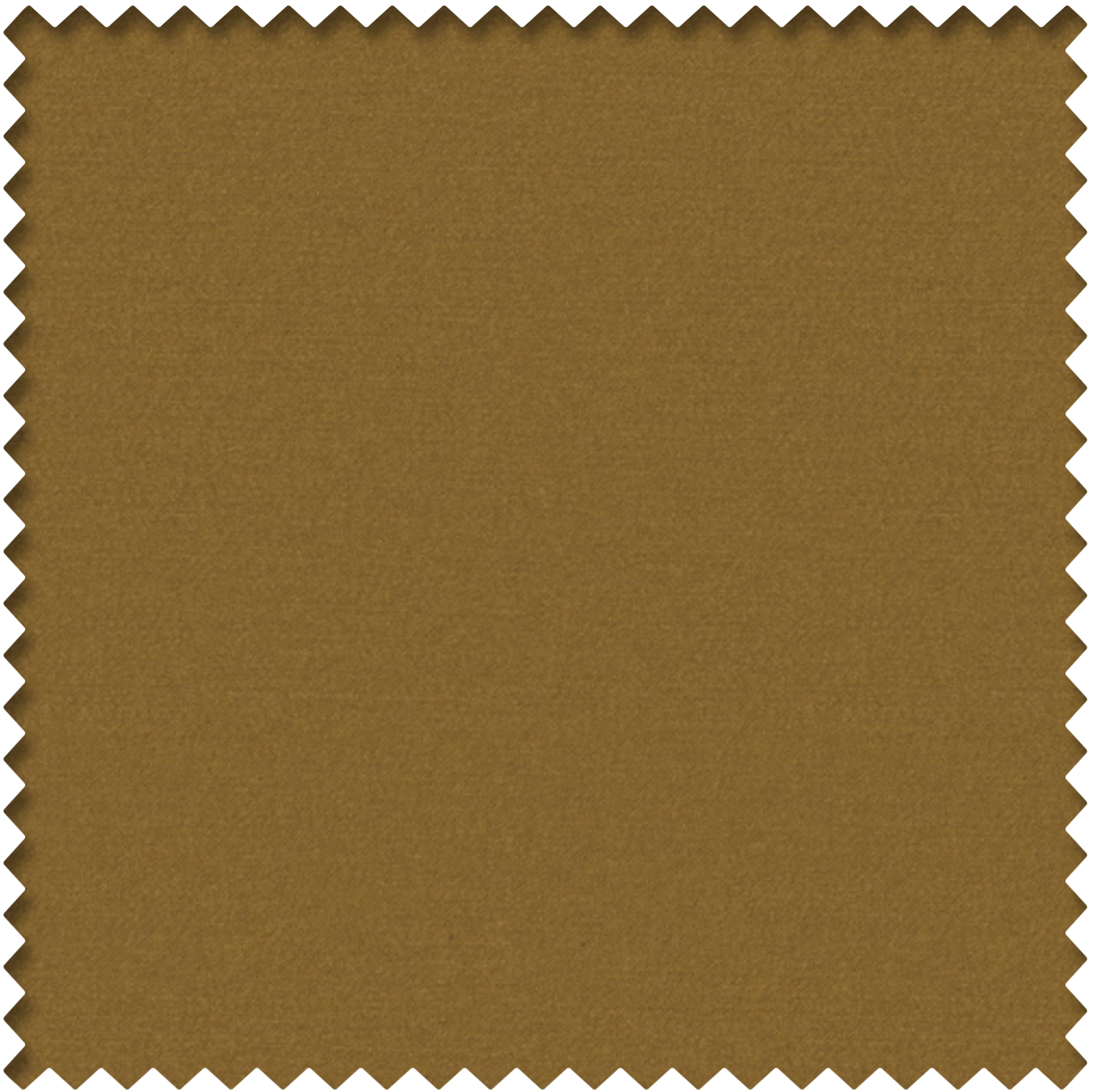


### Colour Way



◀◀ Back to Layer





## VALERIO LEMON CURRY 109511

### Specification

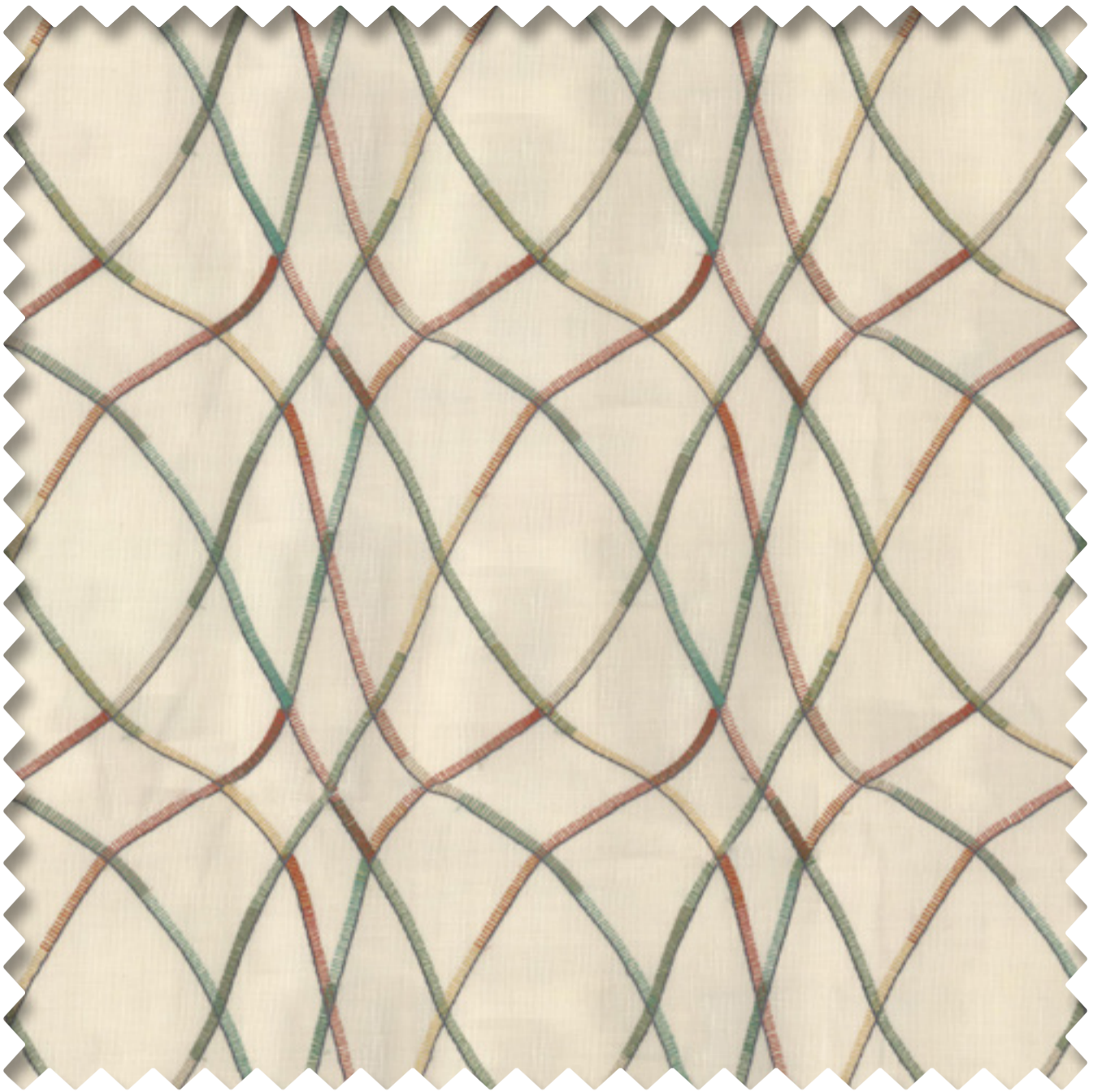
Design : VALERIO  
Shade : LEMON CURRY  
Width : 140 cm  
Composition : 100% POLYESTER  
Repeat : H- N/A x W- N/A  
GSM : 400  
Martindale : 55000 rubs  
Wash Care : M/C WASH AT 30°C , IRON UP  
TO 2 DOTS, HANG DRY , DON'T  
TUMBLE, DON'T BLEACH, CAN  
DRY CLEAN



### Colour Way



◀◀ Back to Layer



## MANAS PINE 111408

### Specification

Design : MANAS  
 Shade : PINE  
 Width : 137 cm  
 Composition : Base - 51% COTTON, 49%  
 POLYSTER, Emb - 100% VISCOSE  
 Repeat : H- 23.8 cm x W- 22.8 cm  
 GSM : 121  
 Martindale : N/A  
 Wash Care : ONLY DRY CLEAN, IRON-STEAM  
 IRON, DON'T BLEACH, DON'T  
 TUMBLE, HANG DRY



### Colour Way



◀◀ Back to Layer



## MANORA SEA GREEN 111409

### Specification

Design : MANORA  
 Shade : SEA GREEN  
 Width : 140 cm  
 Composition : 100% POLYESTER  
 Repeat : H- 46 cm x W- 46.5 cm  
 GSM : 295  
 Martindale : 25000 rubs  
 Wash Care : M/C WASH AT 30°C , IRON UP TO 2 DOTS , HANG DRY , DON'T TUMBLE , DON'T BLEACH, CAN DRY CLEAN



### Colour Way



◀◀ Back to Layer



## KALIKA CANARY 111410

### Specification

Design : KALIKA  
 Shade : CANARY  
 Width : 139 cm  
 Composition : Base - 100% POLYESTER, Emb-  
 100% VISCOSE  
 Repeat : H- 23.6 cm x W- 23.2 cm  
 GSM : 335  
 Martindale : N/A  
 Wash Care : ONLY DRY CLEAN, IRON 2 DOTS,  
 DON'T BLEACH, DON'T TUMBLE,  
 HANG DRY



### Colour Way



◀◀ Back to Layer



## BAKSHI MILLET 112227

### Specification

Design : BAKSHI  
Shade : MILLET  
Width : 151 cm  
Composition : 100% POLYESTER  
Repeat : H- N/A x W- N/A  
GSM : 470  
Martindale : 305000 rubs  
Wash Care : ONLY DRY CLEAN, DON'T IRON,  
DON'T BLEACH, DON'T TUMBLE,  
HANG DRY, VACCUM CLEAN



### Colour Way



◀◀ Back to Layer



## KONARK JUNGLE 111411

### Specification

Design : KONARK  
Shade : JUNGLE  
Width : 140 cm  
Composition : 100% POLYESTER  
Repeat : H- 45.5 cm x W- 46.7 cm  
GSM : 295  
Martindale : 25000 rubs  
Wash Care : M/C WASH AT 30°C , IRON UP  
TO 2 DOTS , HANG DRY , DON'T  
TUMBLE , DON'T BLEACH, CAN  
DRY CLEAN



### Colour Way



◀◀ Back to Layer



## FILORA JADE 111412

### Specification

Design : FILORA  
 Shade : JADE  
 Width : 139.5 cm  
 Composition : 100% POLYESTER  
 Repeat : H- 35 cm x W- 34.9 cm  
 GSM : 295  
 Martindale : 25000 rubs  
 Wash Care : M/C WASH AT 30°C , IRON UP  
 TO 2 DOTS , HANG DRY , DON'T  
 TUMBLE , DON'T BLEACH, CAN  
 DRY CLEAN



### Colour Way



◀◀ Back to Layer



## MODHERA HEATHER TEAL 111419

### Specification

Design : MODHERA  
 Shade : HEATHER TEAL  
 Width : 138.5 cm  
 Composition : 100% POLYESTER  
 Repeat : H- 32.6 cm x W- 34.6 cm  
 GSM : 450  
 Martindale : 25000 rubs  
 Wash Care : M/C WASH AT 30°C , IRON UP TO 2 DOTS , HANG DRY , DON'T TUMBLE , DON'T BLEACH , CAN DRY CLEAN



### Colour Way



◀◀ Back to Photo

◀◀ Back to Layer





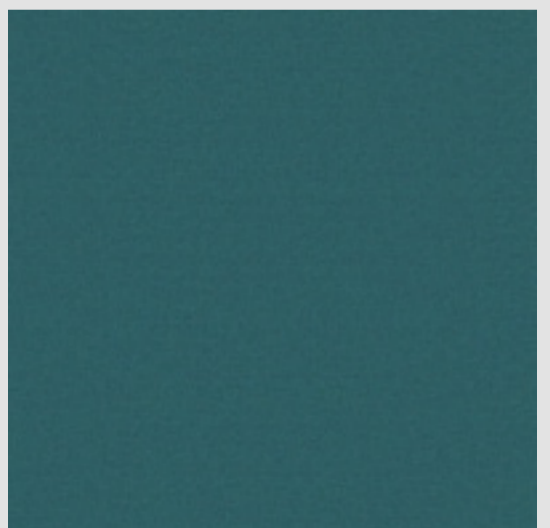
## VALERIO SEA PINE 109519

### Specification

Design : VALERIO  
Shade : SEA PINE  
Width : 140 cm  
Composition : 100% POLYESTER  
Repeat : H- N/A x W- N/A  
GSM : 400  
Martindale : 55000 rubs  
Wash Care : M/C WASH AT 30°C , IRON UP TO 2 DOTS, HANG DRY , DON'T TUMBLE, DON'T BLEACH, CAN DRY CLEAN



### Colour Way



◀◀ Back to Photo

◀◀ Back to Layer



## MANAS HEATHER TEAL 111420

### Specification

Design : MANAS  
 Shade : HEATHER TEAL  
 Width : 137 cm  
 Composition : Base - 51% COTTON, 49%  
 POLYSTER, Emb - 100% VISCOSE  
 Repeat : H- 23.8 cm x W- 22.8 cm  
 GSM : 121  
 Martindale : N/A  
 Wash Care : ONLY DRY CLEAN, IRON-STEAM  
 IRON, DON'T BLEACH, DON'T  
 TUMBLE, HANG DRY



### Colour Way



◀◀ Back to Photo

2

◀◀ Back to Layer



## KALIKA HEATHER TEAL 111421

### Specification

Design : KALIKA  
Shade : HEATHER TEAL  
Width : 139 cm  
Composition : Base - 100% POLYESTER, Emb-  
100% VISCOSE  
Repeat : H- 23.6 cm x W- 23.2 cm  
GSM : 335  
Martindale : N/A  
Wash Care : ONLY DRY CLEAN, IRON 2 DOTS,  
DON'T BLEACH, DON'T TUMBLE,  
HANG DRY



### Colour Way



◀◀ Back to Photo

◀◀ Back to Layer



## MANORA HEATHER TEAL 111422

### Specification

Design : MANORA  
 Shade : HEATHER TEAL  
 Width : 140 cm  
 Composition : 100% POLYESTER  
 Repeat : H- 46 cm x W- 46.5 cm  
 GSM : 295  
 Martindale : 25000 rubs  
 Wash Care : M/C WASH AT 30°C , IRON UP TO 2 DOTS , HANG DRY , DON'T TUMBLE , DON'T BLEACH, CAN DRY CLEAN



### Colour Way



◀◀ Back to Photo

◀◀ Back to Layer



## MOLELA ASH 111101

### Specification

Design : MOLELA  
Shade : ASH  
Width : 143 cm  
Composition : 100% POLYESTER  
Repeat : H- N/A x W- N/A  
GSM : 377  
Martindale : 80000 rubs  
Wash Care : IRON UP TO 2 DOTS , HANG DRY,  
DON'T TUMBLE, DON'T BLEACH,  
CAN DRY CLEAN



### Colour Way



◀◀ Back to Photo

◀◀ Back to Layer



## BAKSHI SMOKE 112251

### Specification

Design : BAKSHI  
Shade : SMOKE  
Width : 151 cm  
Composition : 100% POLYESTER  
Repeat : H- N/A x W- N/A  
GSM : 470  
Martindale : 305000 rubs  
Wash Care : ONLY DRY CLEAN, DON'T IRON,  
DON'T BLEACH, DON'T TUMBLE,  
HANG DRY, VACCUM CLEAN



### Colour Way



◀◀ Back to Layer



## KONARK VERIDIAN 111423

### Specification

Design : KONARK  
Shade : VERIDIAN  
Width : 140 cm  
Composition : 100% POLYESTER  
Repeat : H- 45.5 cm x W- 46.7 cm  
GSM : 295  
Martindale : 25000 rubs  
Wash Care : M/C WASH AT 30°C , IRON UP  
TO 2 DOTS , HANG DRY , DON'T  
TUMBLE , DON'T BLEACH, CAN  
DRY CLEAN



### Colour Way



◀◀ Back to Layer



## FILORA HEATHER TEAL 111424

### Specification

Design : FILORA  
 Shade : HEATHER TEAL  
 Width : 139.5 cm  
 Composition : 100% POLYESTER  
 Repeat : H- 35 cm x W- 34.9 cm  
 GSM : 295  
 Martindale : 25000 rubs  
 Wash Care : M/C WASH AT 30°C , IRON UP TO 2 DOTS , HANG DRY , DON'T TUMBLE , DON'T BLEACH, CAN DRY CLEAN



### Colour Way



◀◀ Back to Photo

◀◀ Back to Layer





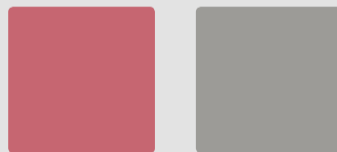
## MODHERA INDIAN RED 111413

### Specification

Design : MODHERA  
 Shade : INDIAN RED  
 Width : 138.5 cm  
 Composition : 100% POLYESTER  
 Repeat : H- 32.6 cm x W- 34.6 cm  
 GSM : 450  
 Martindale : 25000 rubs  
 Wash Care : M/C WASH AT 30°C , IRON UP TO 2 DOTS , HANG DRY , DON'T TUMBLE , DON'T BLEACH, CAN DRY CLEAN



### Colour Way



◀◀ Back to Layer



## VALERIO PEAR 109514

### Specification

Design : VALERIO  
Shade : PEAR  
Width : 140 cm  
Composition : 100% POLYESTER  
Repeat : H- N/A x W- N/A  
GSM : 400  
Martindale : 55000 rubs  
Wash Care : M/C WASH AT 30°C , IRON UP TO 2 DOTS, HANG DRY , DON'T TUMBLE, DON'T BLEACH, CAN DRY CLEAN

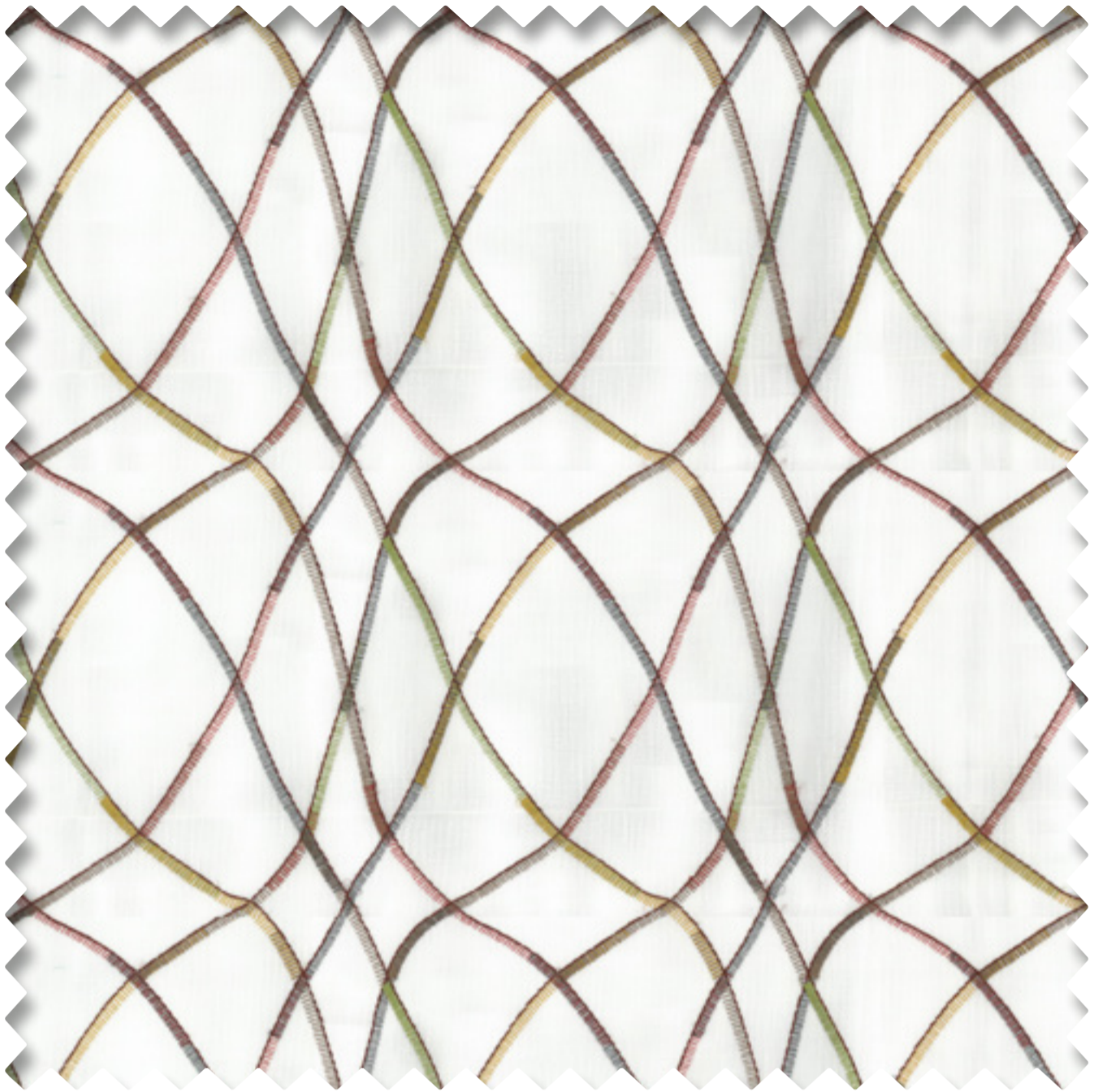


### Colour Way



◀◀ Back to Photo

◀◀ Back to Layer



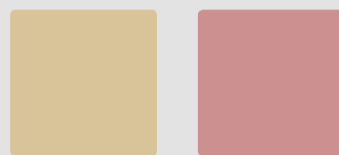
## MANAS CREPE 111414

### Specification

Design : MANAS  
 Shade : CREPE  
 Width : 137 cm  
 Composition : Base - 51% COTTON, 49%  
 POLYSTER, Emb - 100% VISCOSE  
 Repeat : H- 23.8 cm x W- 22.8 cm  
 GSM : 121  
 Martindale : N/A  
 Wash Care : ONLY DRY CLEAN, IRON-STEAM  
 IRON, DON'T BLEACH, DON'T  
 TUMBLE, HANG DRY



### Colour Way



◀◀ Back to Layer



## KALIKA FLEMINGO 111415

### Specification

Design : KALIKA  
 Shade : FLEMINGO  
 Width : 139 cm  
 Composition : Base - 100% POLYESTER, Emb-  
 100% VISCOSE  
 Repeat : H- 23.6 cm x W- 23.2 cm  
 GSM : 335  
 Martindale : N/A  
 Wash Care : ONLY DRY CLEAN, IRON 2 DOTS,  
 DON'T BLEACH, DON'T TUMBLE,  
 HANG DRY



### Colour Way



◀◀ Back to Layer



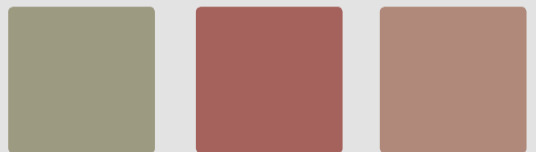
## MANORA CORAL REEF 111416

### Specification

Design : MANORA  
Shade : CORAL REEF  
Width : 140 cm  
Composition : 100% POLYESTER  
Repeat : H- 46 cm x W- 46.5 cm  
GSM : 295  
Martindale : 25000 rubs  
Wash Care : M/C WASH AT 30°C , IRON UP TO 2 DOTS , HANG DRY , DON'T TUMBLE , DON'T BLEACH, CAN DRY CLEAN



### Colour Way



◀◀ Back to Layer



## MOLELA ROSE 11126

### Specification

Design : MOLELA  
Shade : ROSE  
Width : 143 cm  
Composition : 100% POLYESTER  
Repeat : H- N/A x W- N/A  
GSM : 377  
Martindale : 80000 rubs  
Wash Care : IRON UP TO 2 DOTS , HANG DRY,  
DON'T TUMBLE, DON'T BLEACH,  
CAN DRY CLEAN



### Colour Way



◀◀ Back to Layer



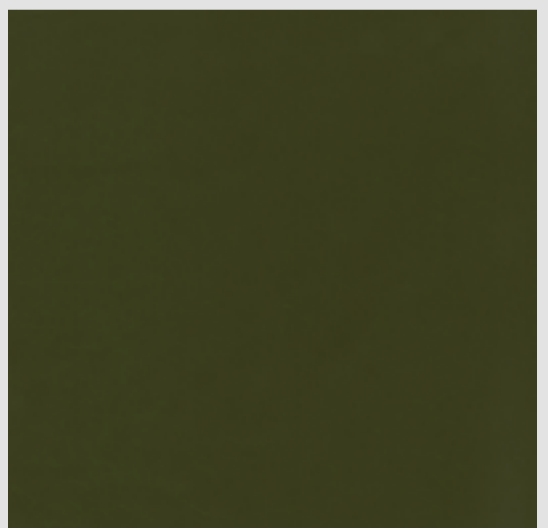
## BAKSHI OLIVE 112228

### Specification

Design : BAKSHI  
Shade : OLIVE  
Width : 151 cm  
Composition : 100% POLYESTER  
Repeat : H- N/A x W- N/A  
GSM : 470  
Martindale : 305000 rubs  
Wash Care : ONLY DRY CLEAN, DON'T IRON,  
DON'T BLEACH, DON'T TUMBLE,  
HANG DRY, VACCUM CLEAN



### Colour Way



◀◀ Back to Layer



## KONARK CRIMSON 111417

### Specification

Design : KONARK  
Shade : CRIMSON  
Width : 140 cm  
Composition : 100% POLYESTER  
Repeat : H- 45.5 cm x W- 46.7 cm  
GSM : 295  
Martindale : 25000 rubs  
Wash Care : M/C WASH AT 30°C , IRON UP  
TO 2 DOTS , HANG DRY , DON'T  
TUMBLE , DON'T BLEACH, CAN  
DRY CLEAN



### Colour Way



◀◀ Back to Layer





## FIORA SALMON 111418

### Specification

Design : FIORA  
 Shade : SALMON  
 Width : 139.5 cm  
 Composition : 100% POLYESTER  
 Repeat : H- 35 cm x W- 34.9 cm  
 GSM : 295  
 Martindale : 25000 rubs  
 Wash Care : M/C WASH AT 30°C , IRON UP  
 TO 2 DOTS , HANG DRY , DON'T  
 TUMBLE , DON'T BLEACH, CAN  
 DRY CLEAN



### Colour Way



◀◀ Back to Layer



## MODHERA AMETHYST 111432

### Specification

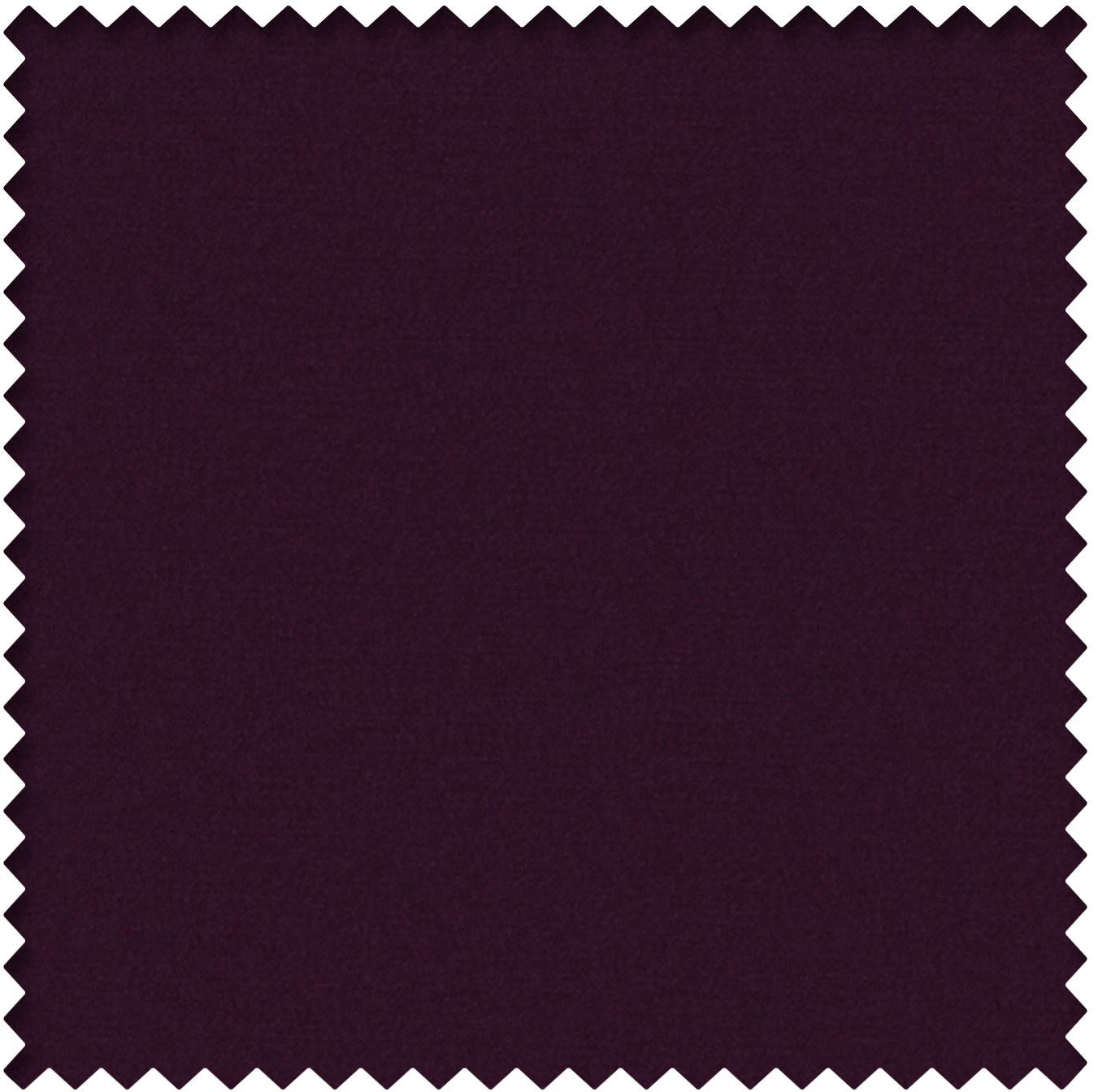
Design : MODHERA  
 Shade : AMETHYST  
 Width : 138.5 cm  
 Composition : 100% POLYESTER  
 Repeat : H- 32.6 cm x W- 34.6 cm  
 GSM : 450  
 Martindale : 25000 rubs  
 Wash Care : M/C WASH AT 30°C , IRON UP TO 2 DOTS , HANG DRY , DON'T TUMBLE , DON'T BLEACH, CAN DRY CLEAN



### Colour Way



◀◀ Back to Layer



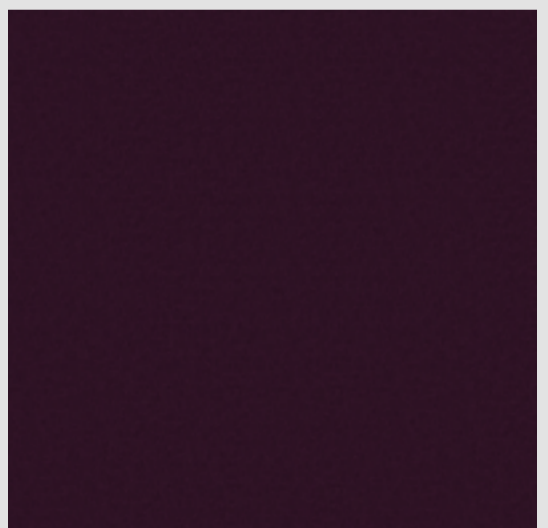
## VALERIO WINE 109532

### Specification

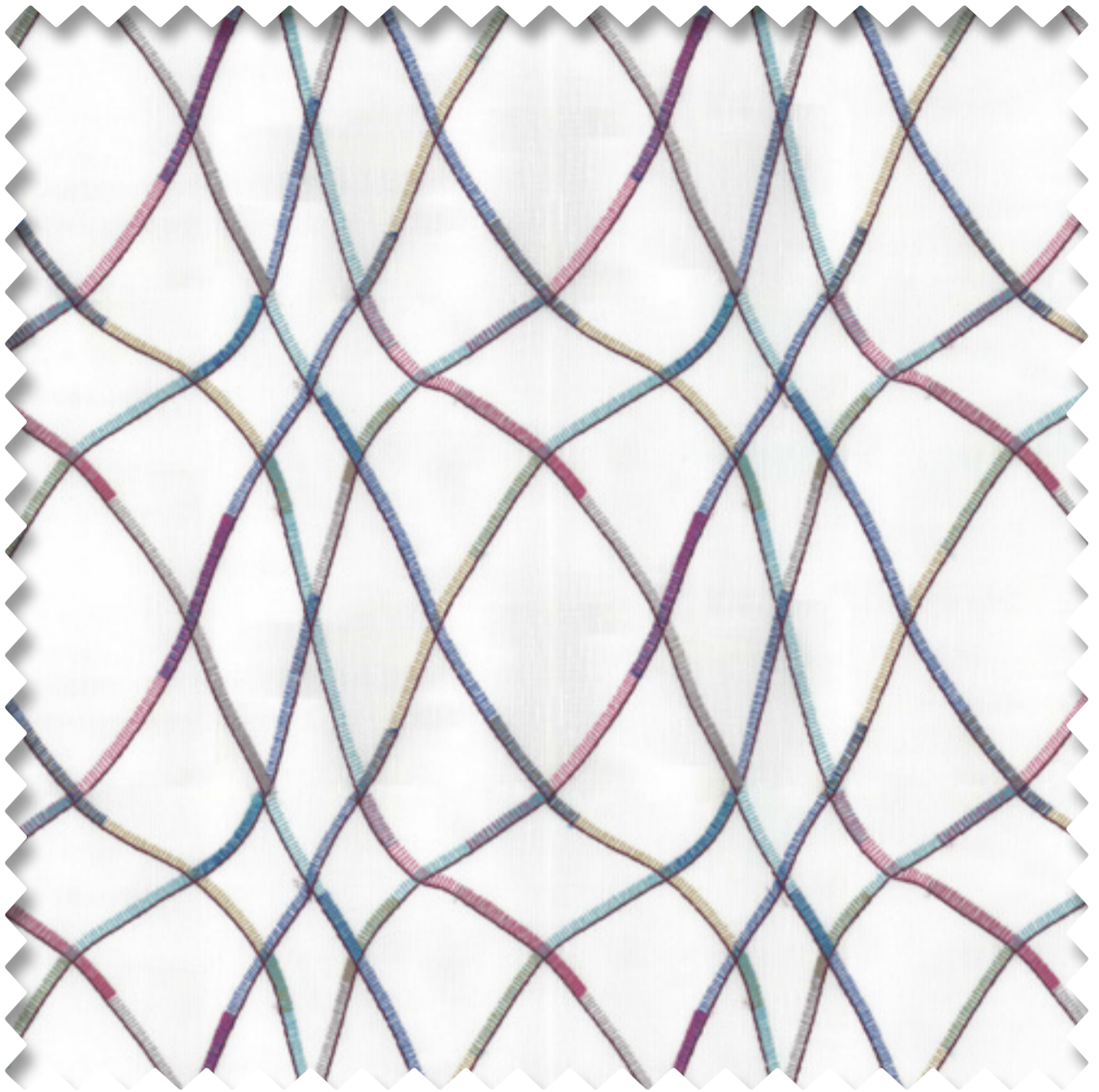
Design : VALERIO  
Shade : WINE  
Width : 140 cm  
Composition : 100% POLYESTER  
Repeat : H- N/A x W- N/A  
GSM : 400  
Martindale : 55000 rubs  
Wash Care : M/C WASH AT 30°C , IRON UP  
TO 2 DOTS, HANG DRY , DON'T  
TUMBLE, DON'T BLEACH, CAN  
DRY CLEAN



### Colour Way



◀◀ Back to Layer



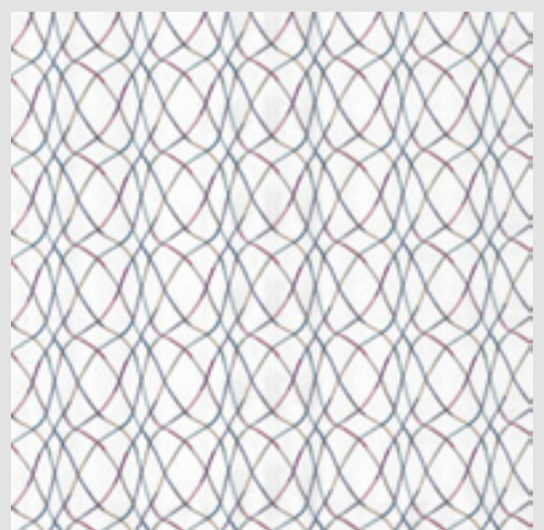
## MANAS IRIS 111433

### Specification

Design : MANAS  
 Shade : IRIS  
 Width : 137 cm  
 Composition : Base - 51% COTTON, 49%  
 POLYSTER, Emb - 100% VISCOSE  
 Repeat : H- 23.8 cm x W- 22.8 cm  
 GSM : 121  
 Martindale : N/A  
 Wash Care : ONLY DRY CLEAN, IRON-STEAM  
 IRON, DON'T BLEACH, DON'T  
 TUMBLE, HANG DRY



### Colour Way



◀◀ Back to Layer



## KALIKA MAGENTA 111434

### Specification

Design : KALIKA  
 Shade : MAGENTA  
 Width : 139 cm  
 Composition : Base - 100% POLYSTER, Emb-  
 100% VISCOSE  
 Repeat : H- 23.6 cm x W- 23.2 cm  
 GSM : 335  
 Martindale : N/A  
 Wash Care : ONLY DRY CLEAN, IRON 2 DOTS,  
 DON'T BLEACH, DON'T TUMBLE,  
 HANG DRY



### Colour Way



◀◀ Back to Layer



## MANORA IRIS 111435

### Specification

Design : MANORA  
 Shade : IRIS  
 Width : 140 cm  
 Composition : 100% POLYESTER  
 Repeat : H- 46 cm x W- 46.5 cm  
 GSM : 295  
 Martindale : 25000 rubs  
 Wash Care : M/C WASH AT 30°C , IRON UP TO 2 DOTS , HANG DRY , DON'T TUMBLE , DON'T BLEACH, CAN DRY CLEAN



### Colour Way



◀◀ Back to Layer



## MOLELA APRICOT 111120

### Specification

Design : MOLELA  
Shade : APRICOT  
Width : 143 cm  
Composition : 100% POLYESTER  
Repeat : H- N/A x W- N/A  
GSM : 377  
Martindale : 80000 rubs  
Wash Care : IRON UP TO 2 DOTS , HANG DRY,  
DON'T TUMBLE, DON'T BLEACH,  
CAN DRY CLEAN



### Colour Way



◀◀ Back to Layer



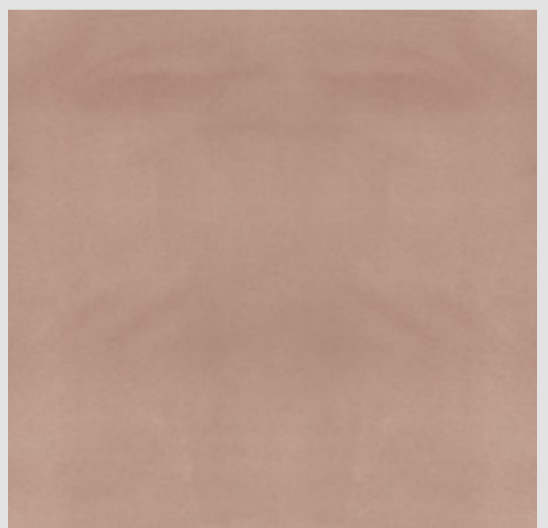
## BAKSHI BLUEBERRY 112295

### Specification

Design : BAKSHI  
Shade : BLUEBERRY  
Width : 151 cm  
Composition : 100% POLYESTER  
Repeat : H- N/A x W- N/A  
GSM : 470  
Martindale : 305000 rubs  
Wash Care : ONLY DRY CLEAN, DON'T IRON,  
DON'T BLEACH, DON'T TUMBLE,  
HANG DRY, VACCUM CLEAN



### Colour Way



◀◀ Back to Layer





## KONARK MUSTARD 111436

### Specification

Design : KONARK  
Shade : MUSTARD  
Width : 140 cm  
Composition : 100% POLYESTER  
Repeat : H- 45.5 cm x W- 46.7 cm  
GSM : 295  
Martindale : 25000 rubs  
Wash Care : M/C WASH AT 30°C , IRON UP  
TO 2 DOTS , HANG DRY , DON'T  
TUMBLE , DON'T BLEACH, CAN  
DRY CLEAN



### Colour Way



◀◀ Back to Layer



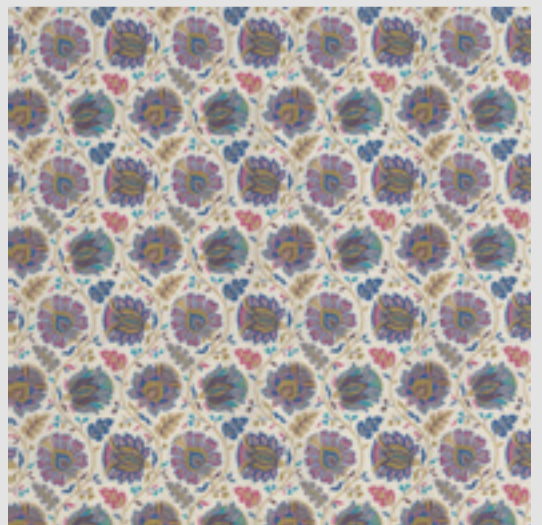
## FILORA ORCHID 111437

### Specification

Design : FILORA  
 Shade : ORCHID  
 Width : 139.5 cm  
 Composition : 100% POLYESTER  
 Repeat : H- 35 cm x W- 34.9 cm  
 GSM : 295  
 Martindale : 25000 rubs  
 Wash Care : M/C WASH AT 30°C , IRON UP TO 2 DOTS , HANG DRY , DON'T TUMBLE , DON'T BLEACH, CAN DRY CLEAN



### Colour Way



◀◀ Back to Layer

QUALITY ASSURANCE BY



Design : FILORA

TEST NAME	VALUE
Martindale	Result
No. of Rubs for the End Point	25000 rubs

Design : GALEN

TEST NAME	VALUE
Martindale	Result
No. of Rubs for the End Point	14000 rubs

Design : KALIKA

TEST NAME	VALUE
Martindale	Result
No. of Rubs for the End Point	N/A

Design : KONARK

TEST NAME	VALUE
Martindale	Result
No. of Rubs for the End Point	25000 rubs

QUALITY ASSURANCE BY



Design : MANAS

TEST NAME	VALUE
Martindale	Result
No. of Rubs for the End Point	N/A

Design : MANORA

TEST NAME	VALUE
Martindale	Result
No. of Rubs for the End Point	25000 rubs

Design : MODHERA

TEST NAME	VALUE
Martindale	Result
No. of Rubs for the End Point	50000 rubs

Design : VALERIO

TEST NAME	VALUE
Martindale	Result
No. of Rubs for the End Point	55000 rubs

QUALITY ASSURANCE BY



Design : BAKSHI

TEST NAME	VALUE
Martindale	Result
No. of Rubs for the End Point	305000 rubs



**PURE**<sup>™</sup>  
FINE FABRIC · FINE LIVING

**ap**röyale  
furnishing by **ap** asianpaints

## Fabric Treatment Available on Request

- FLAME RETARDANT
- ANTIVIRAL
- EASY CLEAN

